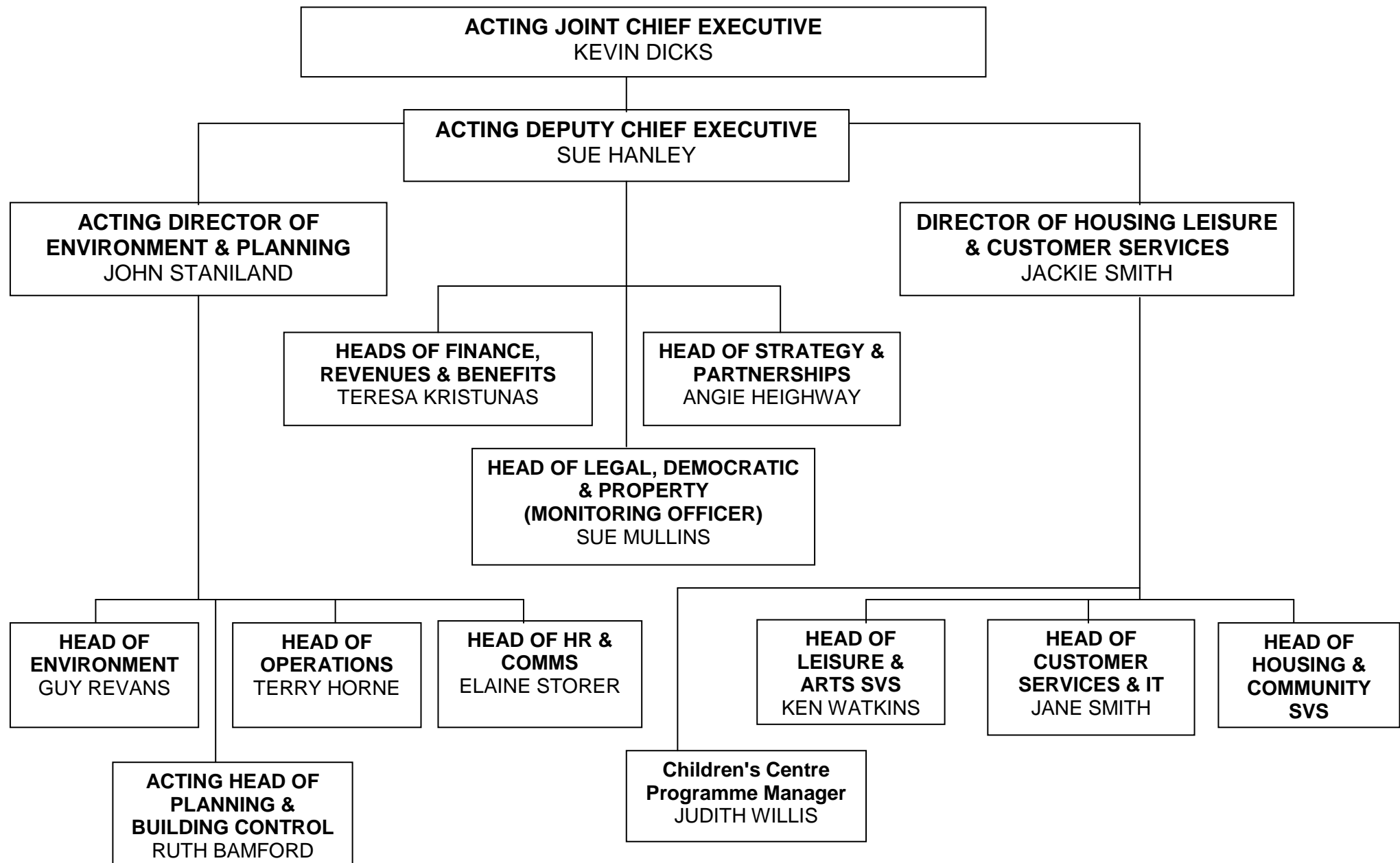
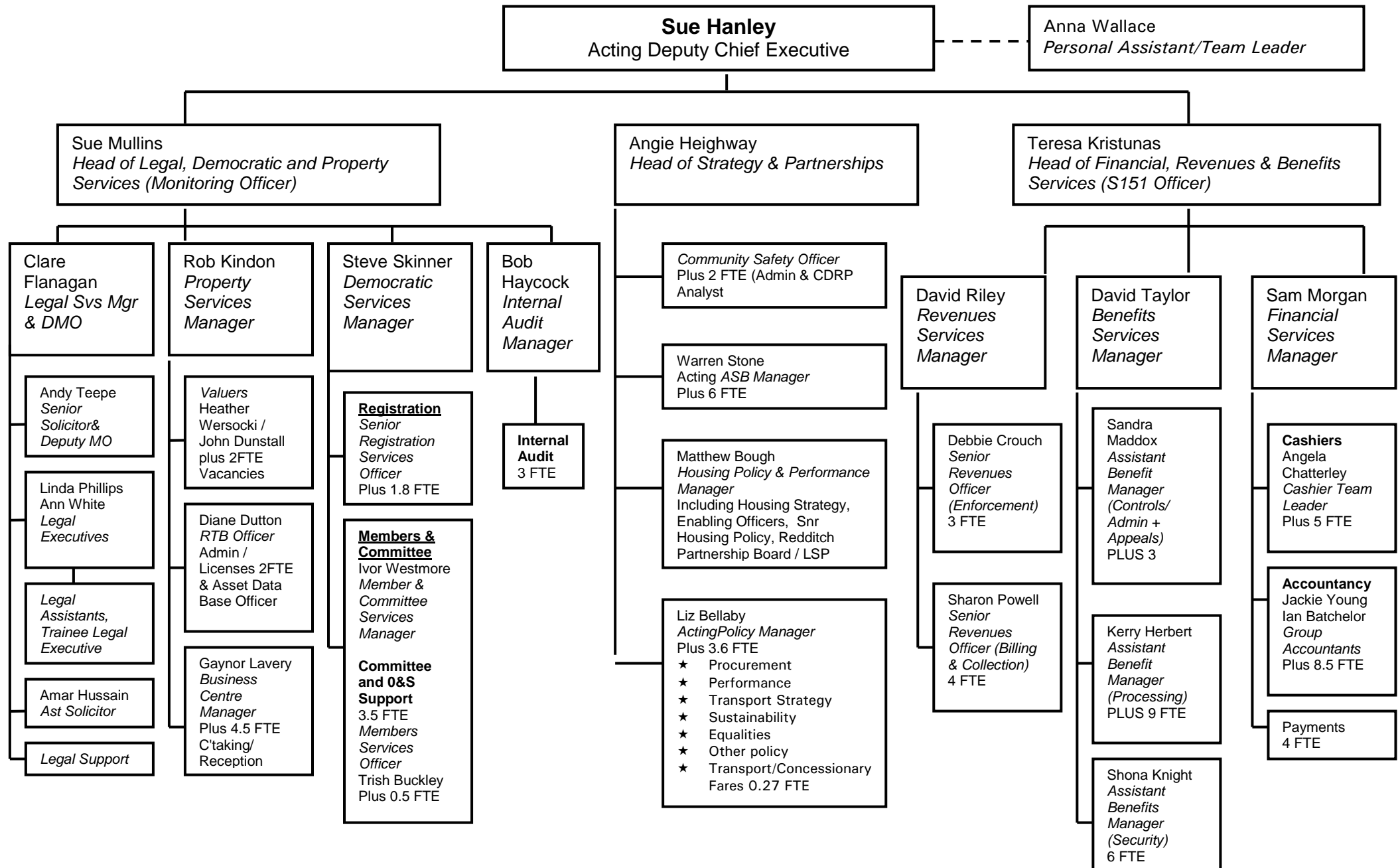


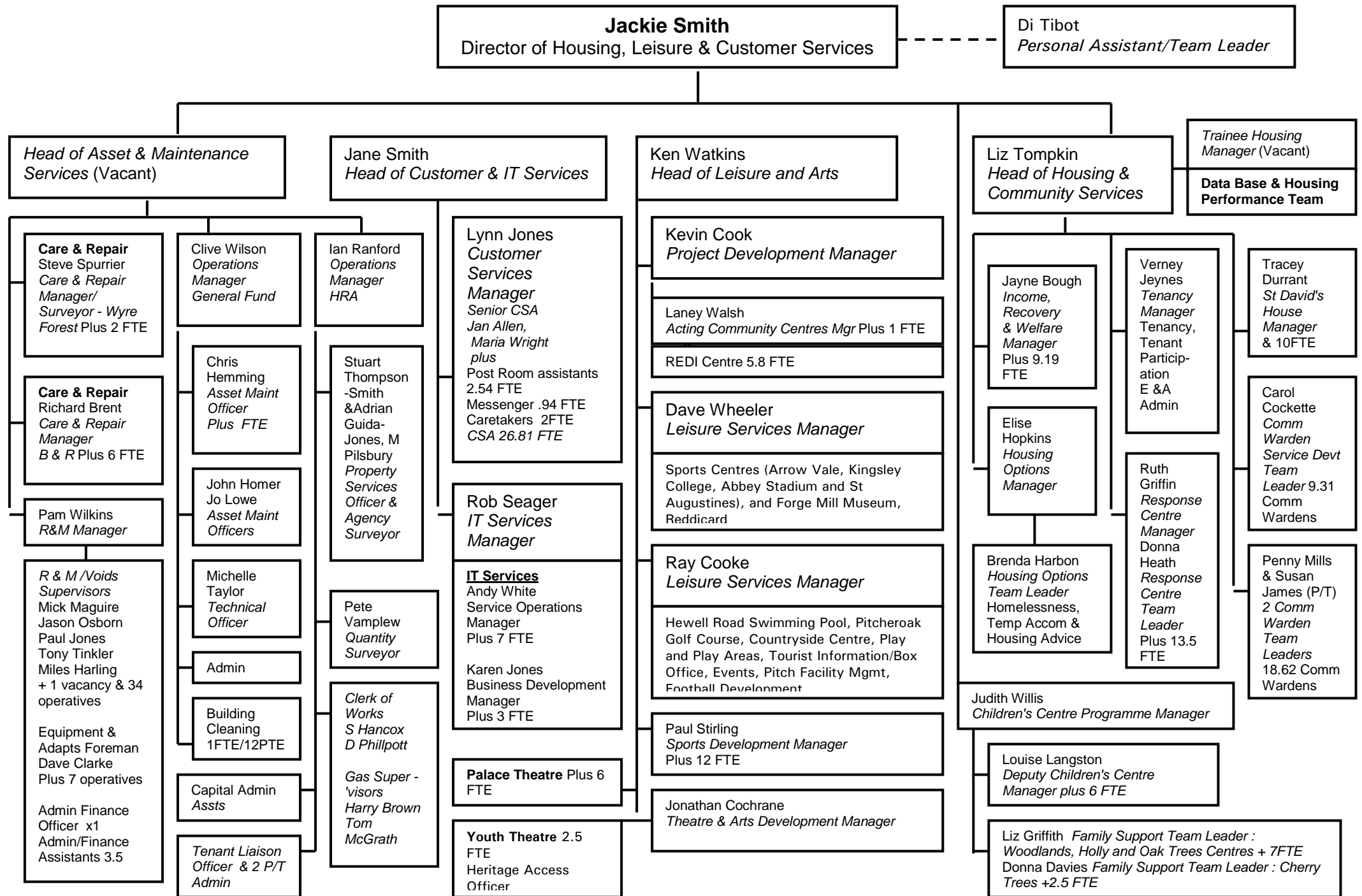
REDDITCH BOROUGH COUNCIL : STRUCTURE FROM 1st AUGUST 2008



ACTING DEPUTY CHIEF EXECUTIVE DIRECTORATE



HOUSING, LEISURE & CUSTOMER SERVICE DIRECTORATE



ENVIRONMENT & PLANNING DIRECTORATE

John Staniland
Acting Director of Environment & Planning

Nigel Boot
Personal Assistant (Seconded)

Terry Horne
Head of Operations

Transport & Supplies
Paul Mills
Manager
Plus 11 FTE

Landscape & Cleansing
Dave Kesterton
Manager
Plus 69 FTE

Waste Collection Services
Liz Williams
Manager
Plus 22 FTE

Admin & Finance
Jeanette Flitcroft
Team Leader
Plus 4.49 FTE

Directorate Support

Crematorium/ Cemeteries
Ian Gregory
Bereavement Services Manager
Plus 5.07 FTE

Market
Darren Hawkins
Acting Assistant Market Supervisor

Shopmobility & Dial-a-Ride
Barbara Krasniewicz
Acting Dial a Ride & Shopmobility Manager
Sue Cobley
Acting Shopmobility Supervisor
Plus 3.11 FTE
Jan Smith
Dial-A-Ride Supervisor
Plus 8.27 FTE

Guy Revans
Head of Environment

Waste Management Services
Sue Horrobin
Manager Plus 5.5FTE

Landscapes & Countryside Services
Carl Walker
Manager Plus 8 FTE

Environmental Health
Lisa Roberts
Environmental Health Manager

Food/Health & Safety
4 FTE

Pollution / Private Sector
5 FTE

Plus 2 FTE

Dog Warden Contractor & Rat Control Contractor

Sue Garratt
Taxi Licensing Manager
Plus 3.5 FTE

Ruth Bamford
Acting Head of Planning & Building Control

Building Control
Building Control Manager
Colin Audritt
Plus Building Surveyors

Development Plans
Emma Baker
Acting Development Plans Manager
Plus 4 FTE

Development Control
Ailith Rutt
Development Control Manager
Plus 8 FTE

Economic Development
Georgina Harris

Elaine Storer
Head of Human Resources & Communications

Becky Barr
Human Resources Development Manager

Human Resources
Catherine Tedstone & Lindsey Wood
HR Officer
Plus Admin Support

HR Support Officer

Sue Richards
Organisational Development Officer
Plus Admin Support

Payroll
Vacant
Senior Payroll Officer

Payroll Officer & Assistant Payroll

Communications
Andrian Marklew
Communications & Marketing Manager

Helen Halls & Angela Walsh
Media & Comms Officers

Plus Admin Assistant

Design & Print
Bobbie Ashby
Senior Design & Print Officer

Design & Print 2 FTE
Print & Reprographics 2 FTE

Health & Safety
John Walker
Health & Safety Manager
Plus Fire Risk Officer & Admin Assistant

Ron Colebrook
Job Evaluation Project Officer
Plus JE Admin Officer