

# **22/00571/FUL**

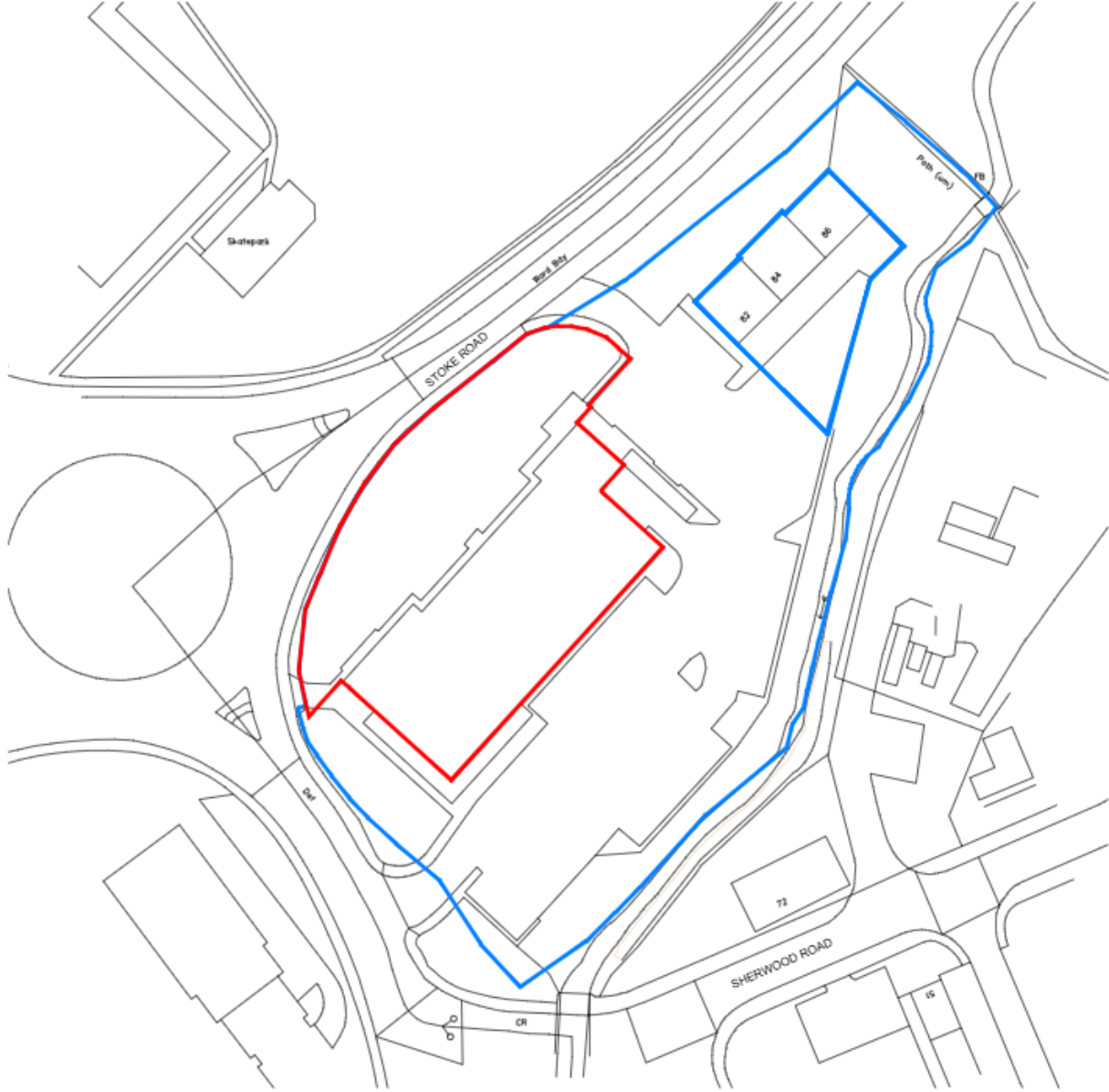
**Aldi, Sherwood Road, Bromsgrove**

**Proposed extension comprising additional retail floor space and reconfigured warehouse and welfare block layout.**

## **Recommendation**

- (1) Minded to APPROVE FULL PLANNING PERMISSION**
- (2) That DELEGATED POWERS be granted to the Assistant Director for Planning, Leisure and Cultural Services to determine the full planning application:**
  - (a) Following the expiry of the consultation period on 8 April 2025 and in the event that representations are received, that DELEGATED POWERS be granted to the Assistant Director for Planning, Leisure and Cultural Services, in consultation with the Chairman of the Planning Committee, to assess whether new material considerations have been raised, and to issue a decision after the expiry of the statutory publicity period accordingly.**
  - (b) To agree the final scope and detailed wording and numbering of conditions as set out in the report.**

# Site Location Plan

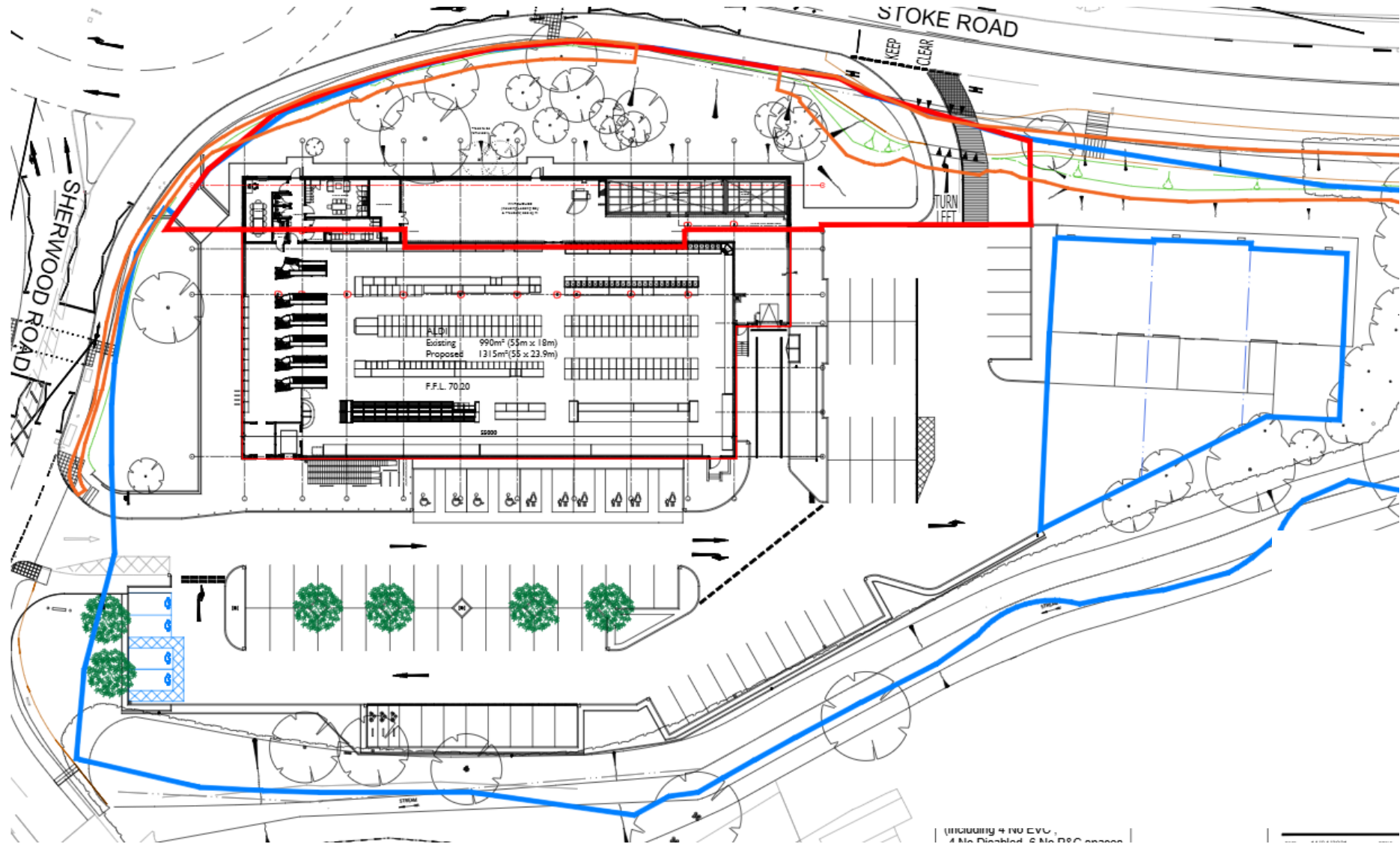


# The Site

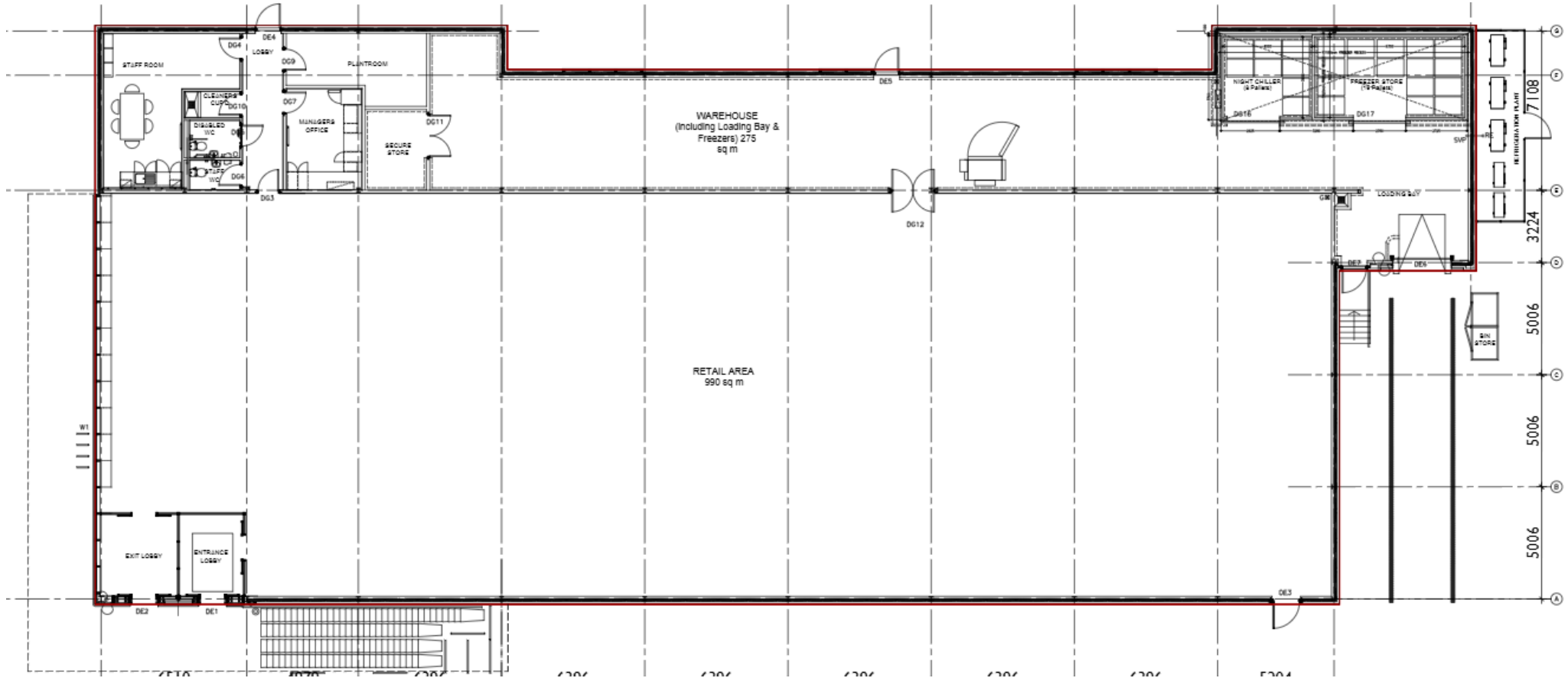




# Proposed Site Plan

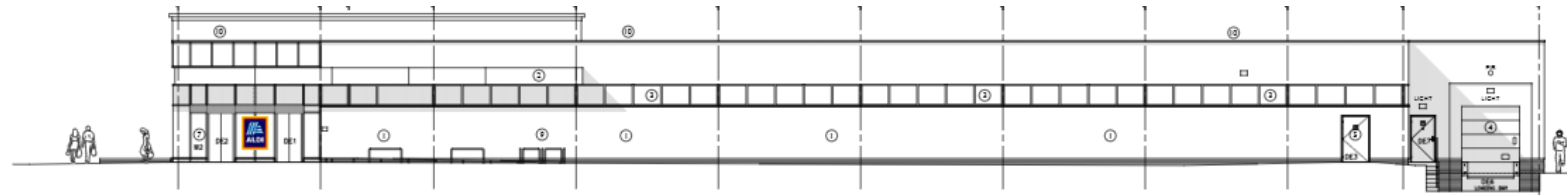


# Existing Floor Plan

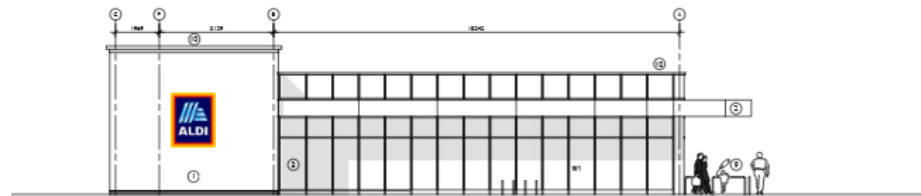




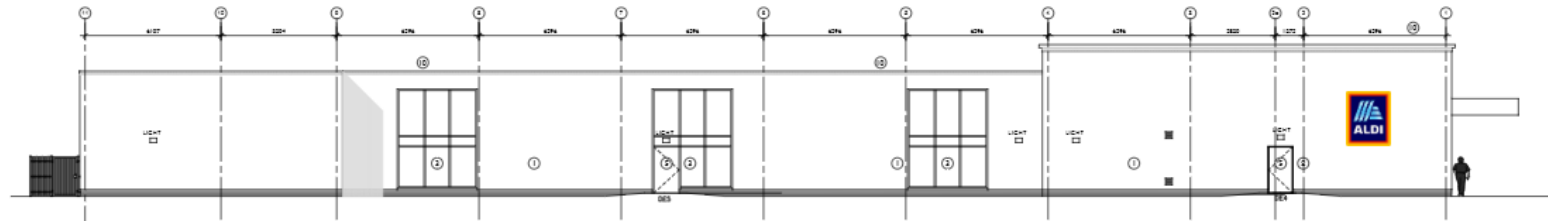
# Existing Elevations



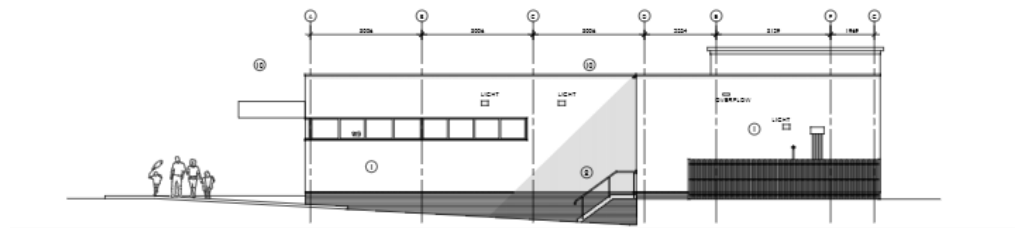
EAST ELEVATION



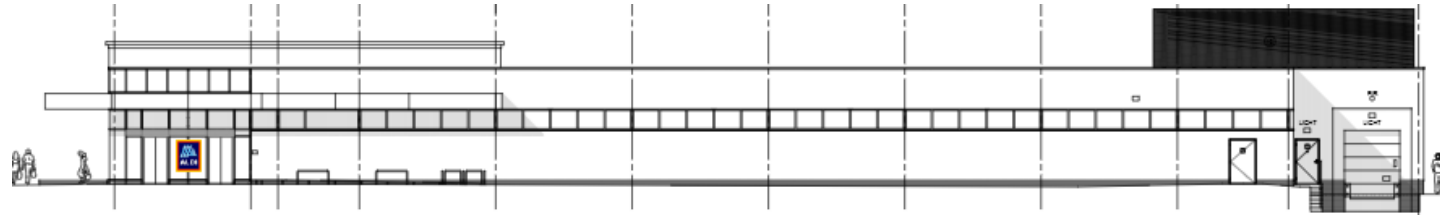
SOUTH ELEVATION



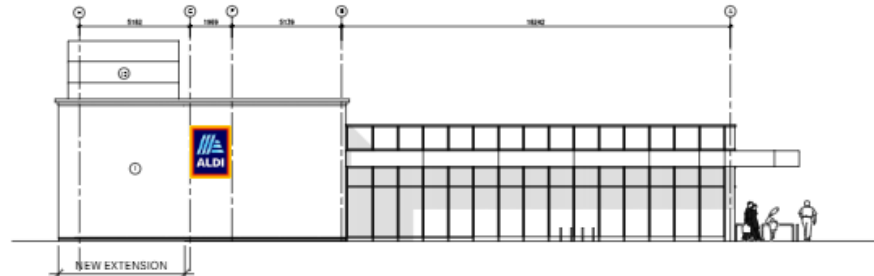
WEST ELEVATION



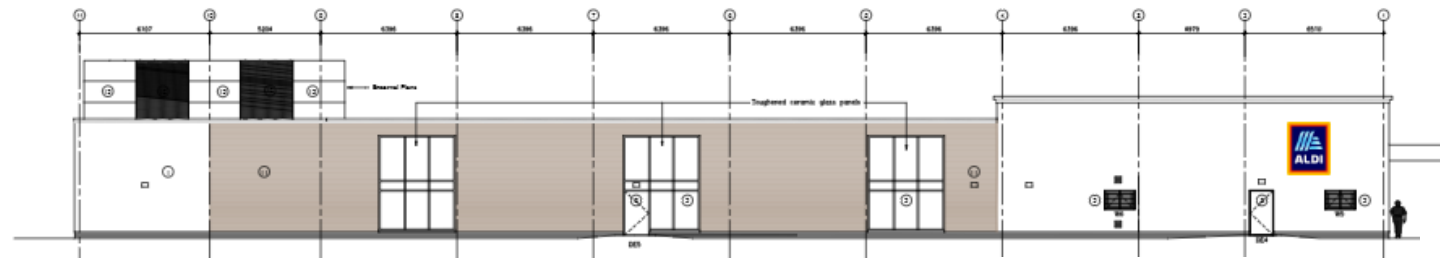
# Proposed Elevations



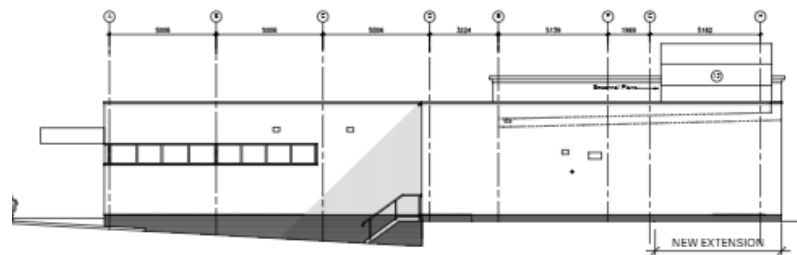
EAST ELEVATION



SOUTH ELEVATION



WEST ELEVATION



NORTH ELEVATION



# Proposed Landscaping Scheme

