

24/00838/S73

Development Site At, Weights Lane, Redditch,
Worcestershire

Variation of condition 4 of hybrid planning permission
19/00976/HYB

Substitution of HQI 73 House Type with HQI 50 House
Type on Plots 80-83 and reorientation of Plots 84-85 in
order to address gradients onsite.

Recommendation: Minded to GRANT, delegated
powers

Approved Framework Plan



Site Location Plan



Approved Site Layout under 19/00976/HYB



Proposed Site Layout (B&W)

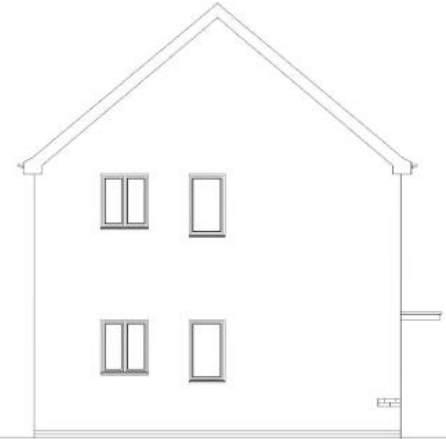




Front Elevation



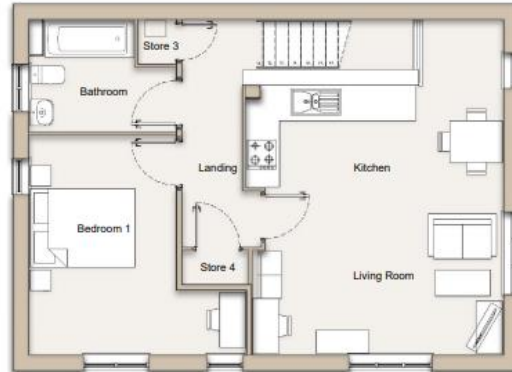
Side Elevation



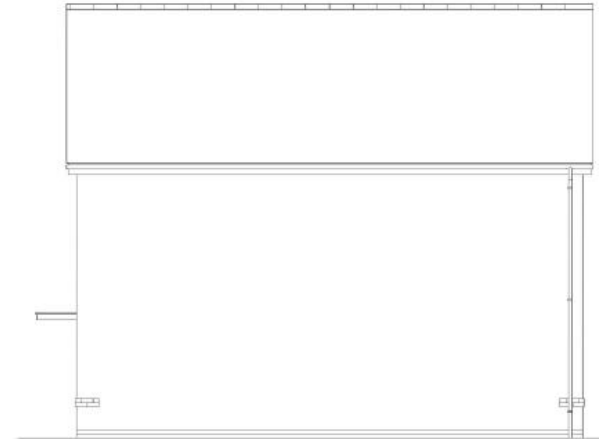
Side Elevation



Ground Floor Plan



First Floor Plan



Rear Elevation

HQI 50 1 Bedroom Maisonettes

Social rent