

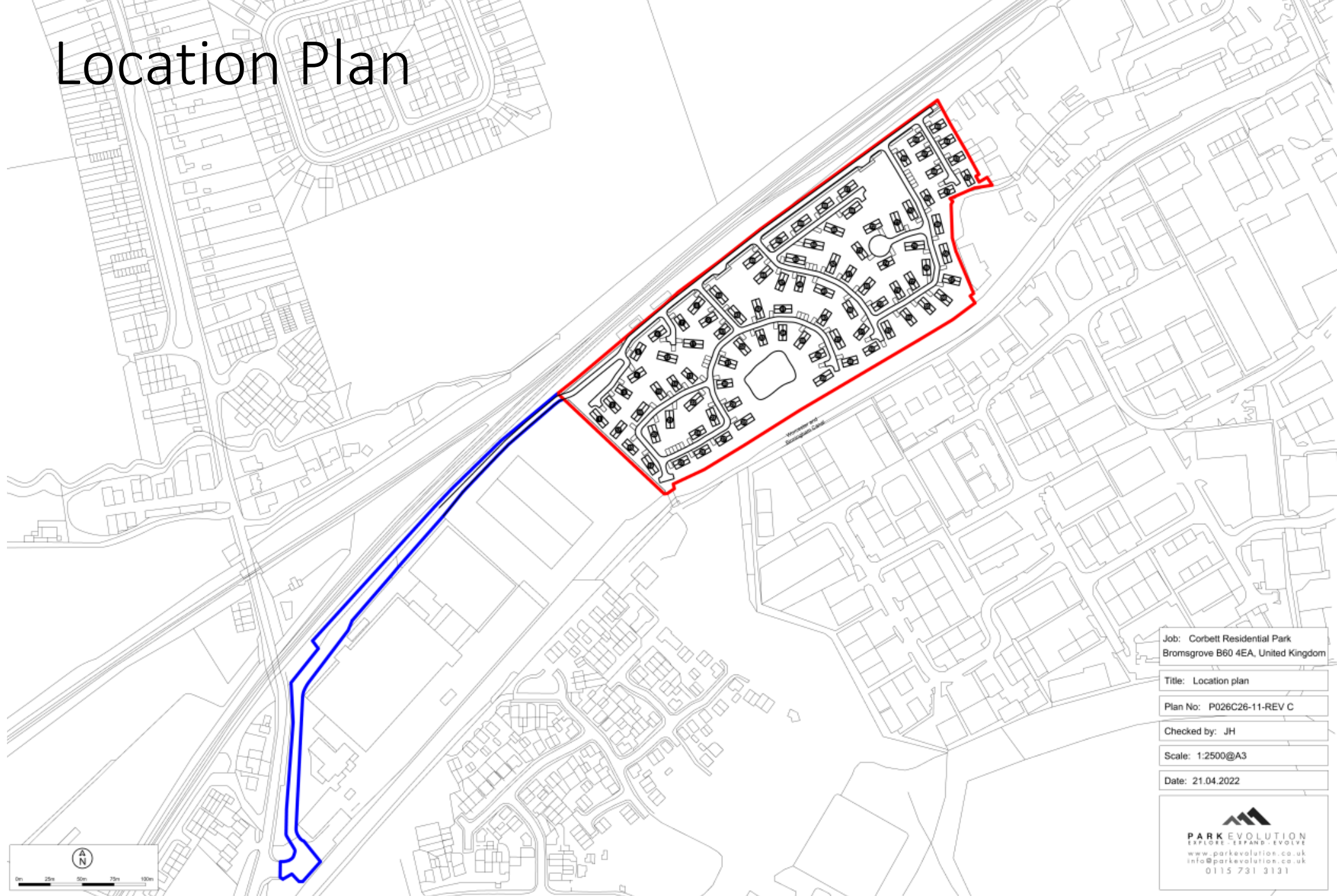
20/00643/FUL

Corbett Business Park
Shaw Lane, Stoke Prior
B60 4EA

Full Planning Permission for the use of land for the stationing of 90 static residential park homes for the over 55s, with associated parking, internal service roads, and landscaping and acoustic fence to the north, east and west boundaries

Recommendation: Refusal

Location Plan



Job: Corbett Residential Park
Bromsgrove B60 4EA, United Kingdom

Title: Location plan

Plan No: P026C26-11-REV C

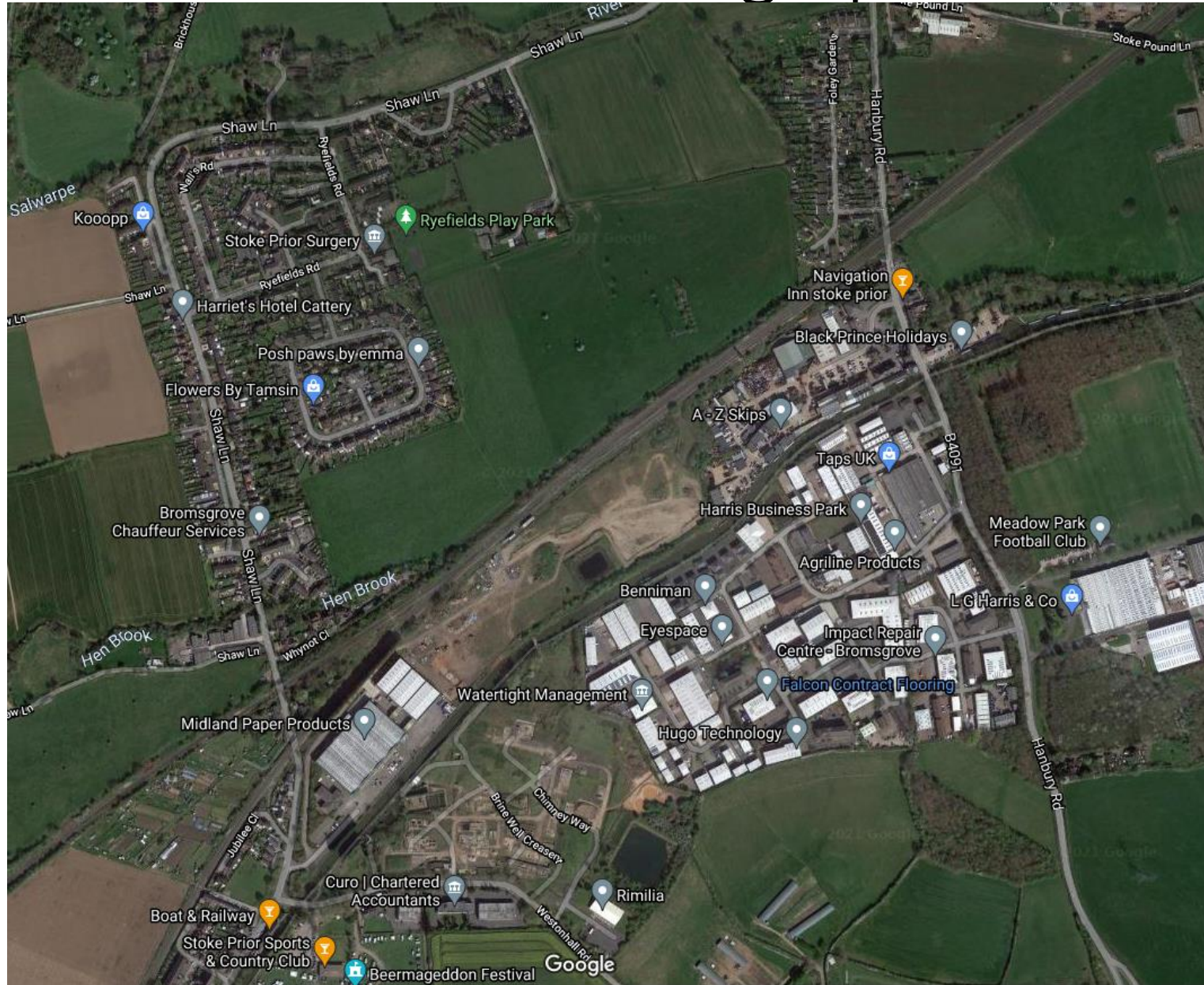
Checked by: JH

Scale: 1:2500@A3

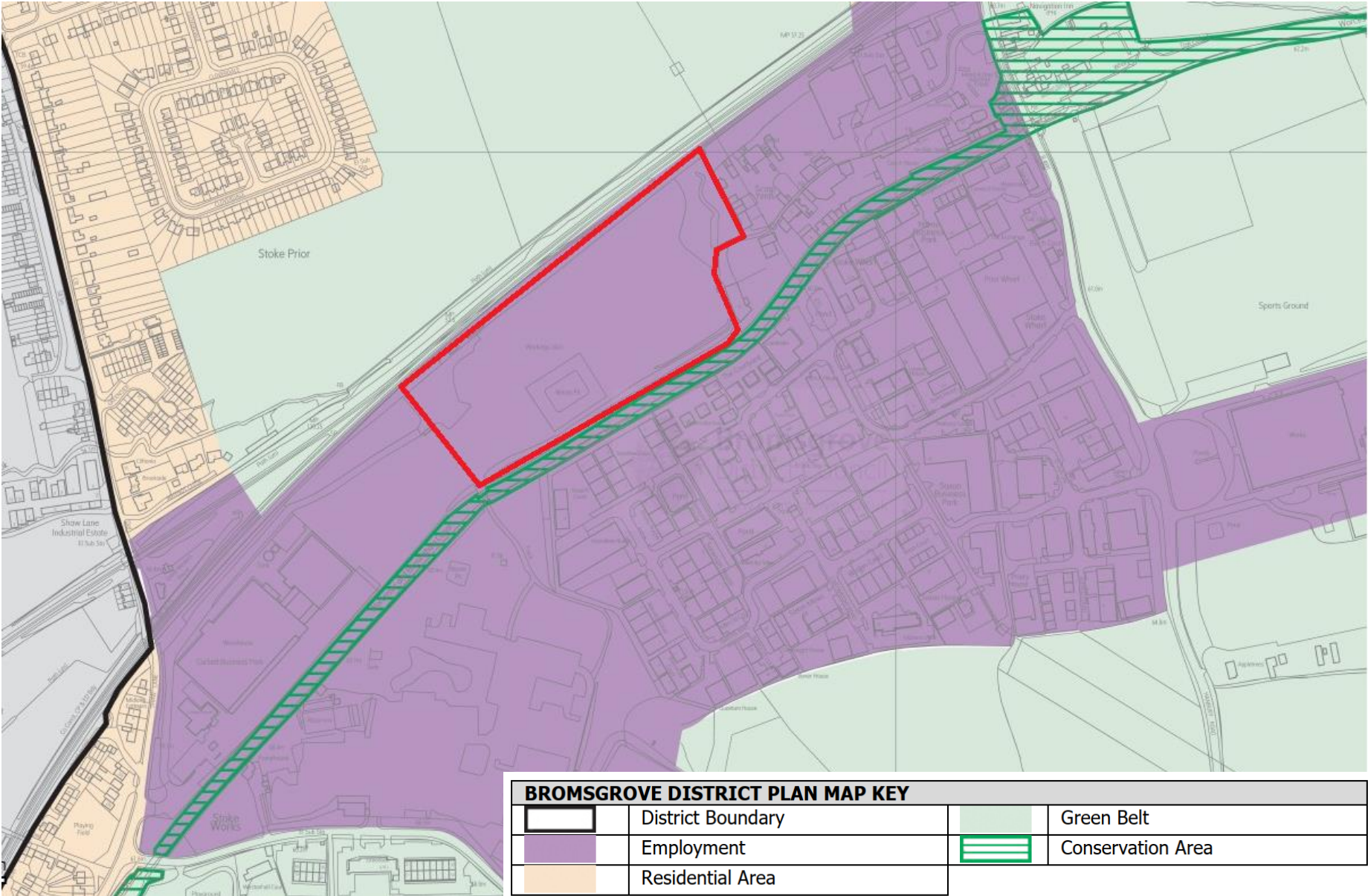
Date: 21.04.2022


PARKEVOLUTION
EXPLORE · EXPAND · EVOLVE
www.parkevolution.co.uk
info@parkevolution.co.uk
0115 731 3131

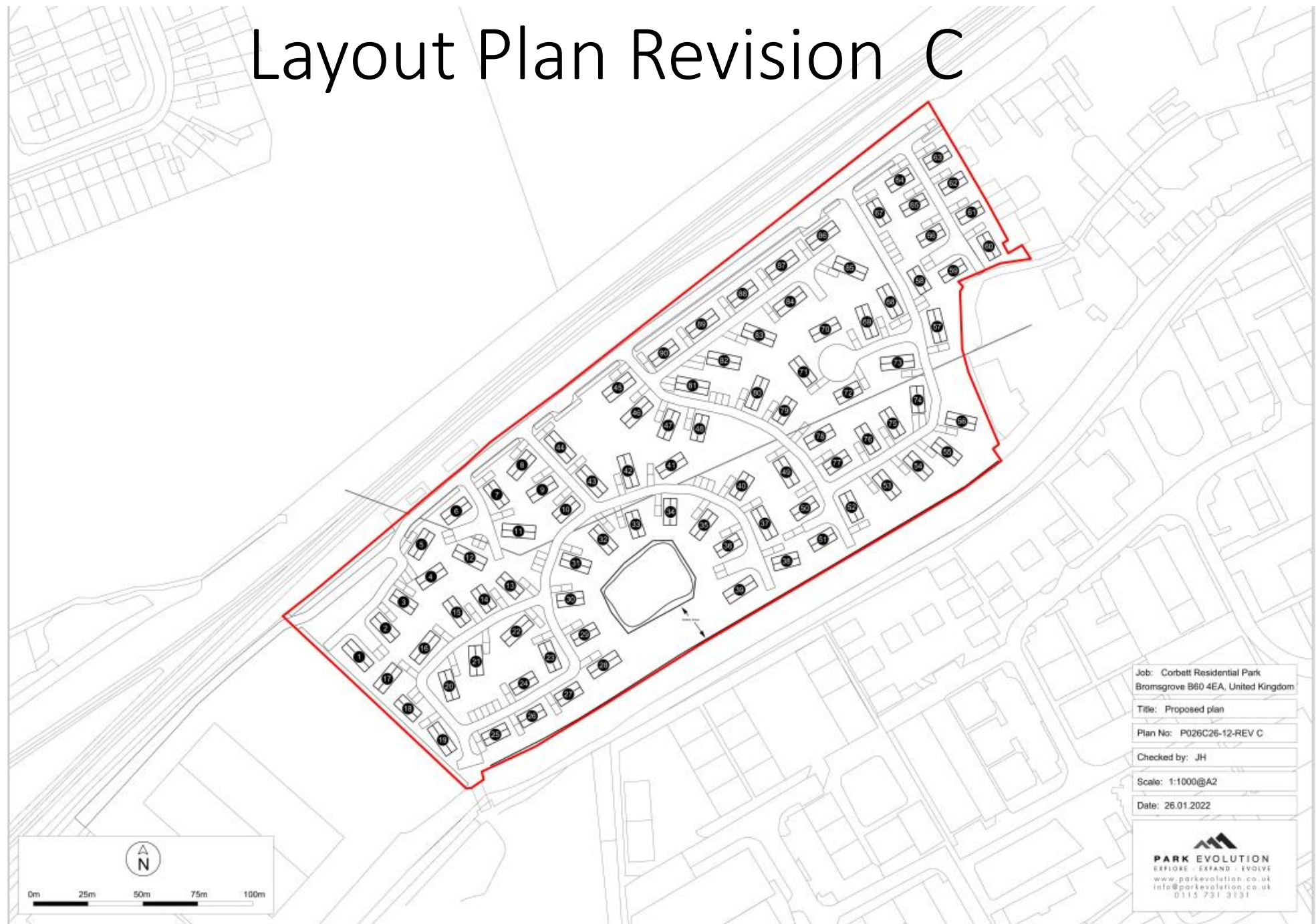
Aerial Photograph



Extract from Bromsgrove District Plan with site edged red



Layout Plan Revision C



Acoustic Fencing Plan

Corbett Residential Park - Acoustic Fencing

Scale: 1:1000@A2

Date: 26.01.2022

— 2.5m high Jakoustic® Reflective | Acoustic Fencing with 2.41m between Post Centres

— 2m high Jakoustic® Reflective | Acoustic Fencing with 2.41m between Post Centres



Corbett Residential Park

Scale: 1:1000@A2

Date: 26.01.2022



Proposed native species tree and shrub planting



Proposed native species hedges



Existing scrub and trees



Existing hedges

Landscaping Scheme



PARK EVOLUTION
EXPLORE · EXPAND · EVOLVE

Illustrative CGI of how proposed development would appear.
view looking north west



Illustrative CGI of how proposed development would appear.
view looking north west



Charnwood Park Home illustration

Charnwood



Charnwood park home exterior



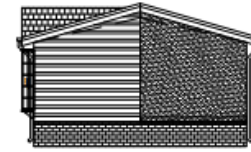
ELEVATION A



ELEVATION C

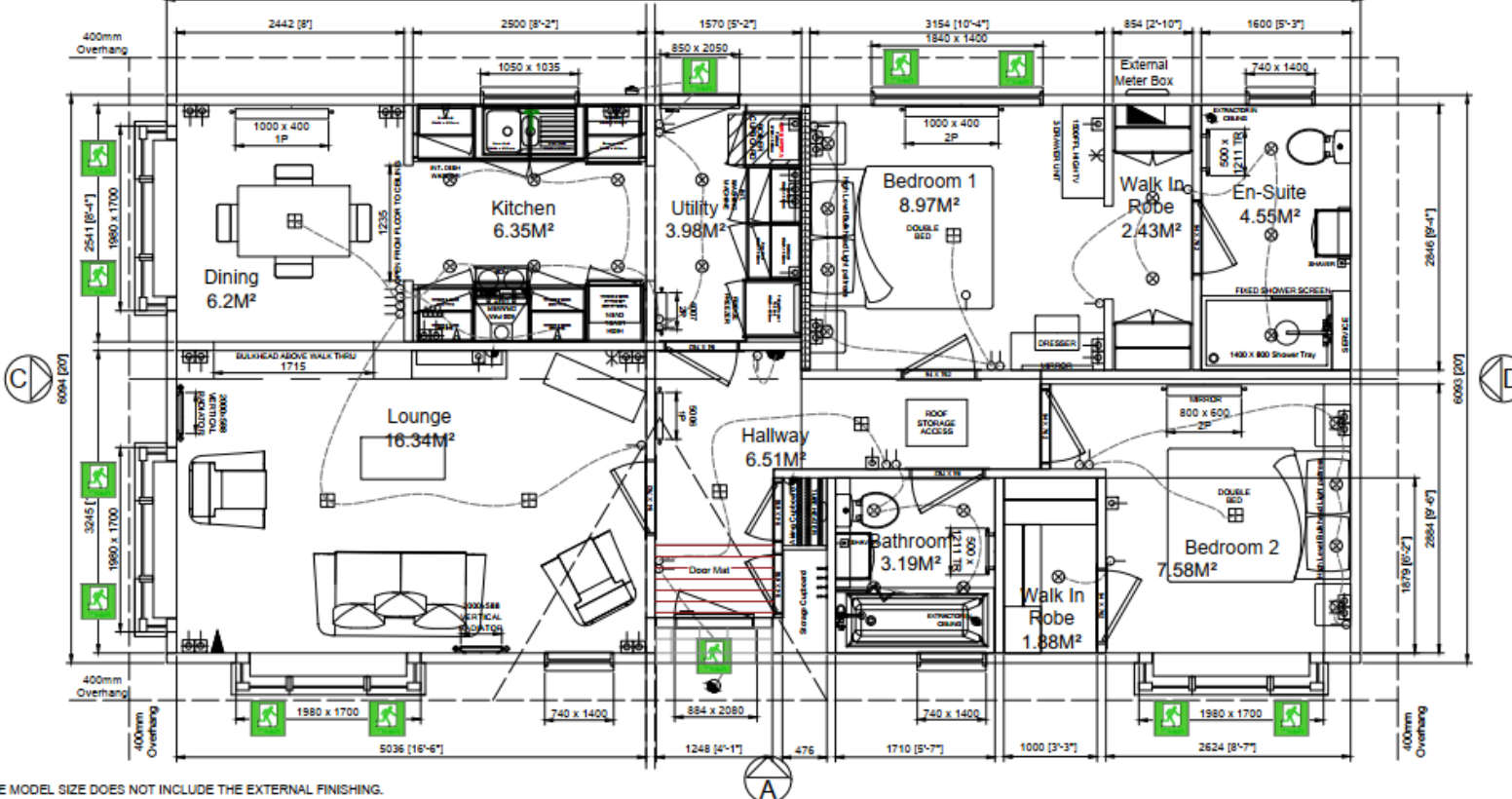


ELEVATION B



ELEVATION D

VAULTED
FLAT CEILING
12804 (423)



PLEASE NOTE - THE MODEL SIZE DOES NOT INCLUDE THE EXTERNAL FINISHING.
ALLOW 56mm PER ELEVATION FOR STUCCO & 40mm PER ELEVATION FOR CANEXEL CLADDING.

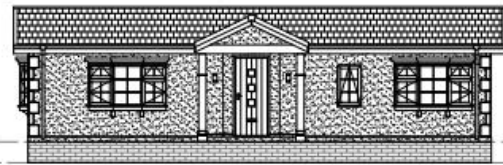
| LEGEND | | REV | DESCRIPTION | AUTH | DATE | SALES | DATE | TITLE |
|---------------------------|-------------------------|---------------------|--------------------------|------|------|--|------|--------------------------------|
| Single Socket | 2-Way Light Switch | Under Locker Light | Shower Socket | | | PRODUCT: | DATE | WILLERBY |
| Double Socket | 3-Way Light Switch | Recessed Down light | Single Socket (IP RATED) | | | TECHNICAL: | DATE | WILLERBY PARK HOMES |
| Telephone | 4-Way Light Switch | Flush Ceiling light | Double Socket (IP RATED) | | | | | CHARWOOD |
| TV | 5-Way Light Switch | LED Strip Light | External Tap | | | NOTES: | | 12,804m x 6,094m (42ft x 20ft) |
| Fuse Spur | Light Point - Spotlight | Internal Wall light | BARK Light | | | 1. Shall be in accordance to SSKMS | | DWG NO. |
| Smoke Alarm | Light Point - Pendant | Consumer Unit | Satellite Connection | | | 2. Please see elevation details for correct setting out of window features. | | CHA-01-0001-000 |
| Carbon Mono Detector | External Spotlight | Meter Box | | | | 3. Further drawing will be sent to customer which includes for Production issue. | | SCALE |
| Mechanical Extraction Fan | External Wall light | Thermostat | | | | 4. Dimensions are in 'feet'. Do not scale, if in doubt ASK. | | NTS |

Hazlewood Park Home illustration

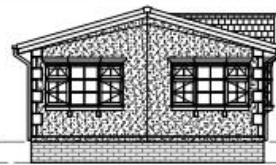
Hazlewood Park Home



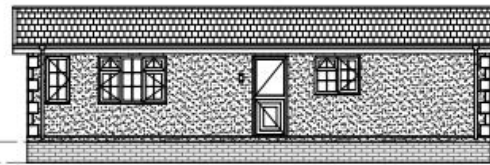
Hazelwood park home exterior



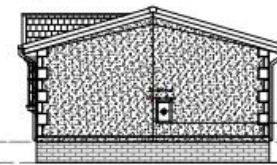
ELEVATION A



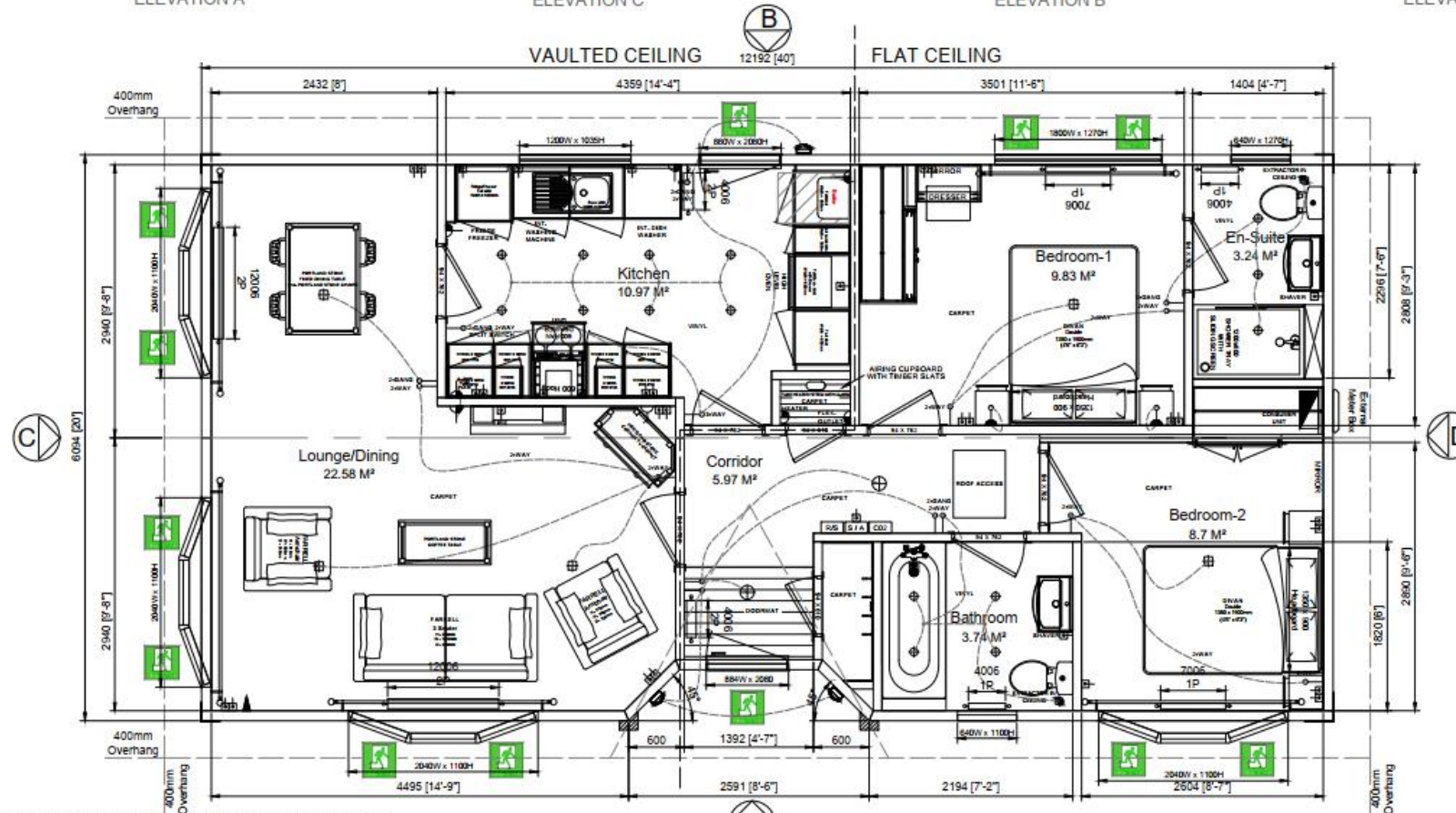
ELEVATION C



ELEVATION B



ELEVATION D



PLEASE NOTE - THE MODEL SIZE DOES NOT INCLUDE THE EXTERNAL FINISHING.
ALLOW 56mm PER ELEVATION FOR STUCCO & 40mm PER ELEVATION FOR CANEXEL CLADDING.

| LEGEND | | REV | DESCRIPTION | AUTH | DATE | SALES | DATE | TITLE |
|--------|---------------------------|-----|-----------------------------------|------|----------|--|------|--------------------------------|
| | Single Socket | 1 | ISSUED FOR CLIENT REVIEW | AM | 17/08/18 | PRODUCT: | DATE | HAZLEWOOD |
| | Double Socket | 2 | UPDATED TO MATCH INVENTOR DETAILS | AM | 13/09/18 | TECHNICAL: | DATE | WILLERBY PARK HOMES |
| | Telephone | 3 | KITCHEN UNIT DETAILS CORRECTED | AM | 20/11/18 | NOTES: | | HAZLEWOOD 2 BED |
| | TV | 4 | FLOOR CASSETTES OVERLAP | AM | 11/02/19 | 1. Please see elevation details for correct setting out of exterior features. | | 12,192m x 6,094m (40ft x 20ft) |
| | Fire Alarm | 5 | DOOR & RADIATOR DETAILS UPDATED | AM | 21/08/19 | 2. A further drawing will be sent to customer when adopted for Production Issue. | | DWG NO. |
| | Smoke Alarm | 6 | DRAWING BORDER UPDATED | MD | 21/10/19 | 3. Dimensions are in 'Feet', Do not scale, if in doubt ASK. | | RPH-00-S002-000 |
| | Carbon Monoxide Detector | 7 | UPDATED FOR REVIT | - | - | | | SCALE |
| | Mechanical Extraction Fan | - | | - | - | | | NTS |
| | 3-Way Light Switch | | | | | | | |
| | 2-Gang Light Switch | | | | | | | |
| | 1-Gang Light Switch | | | | | | | |
| | LED Strip Light | | | | | | | |
| | Light Point - Spotlight | | | | | | | |
| | Light Point - Pendant | | | | | | | |
| | Under Locker Light | | | | | | | |
| | Recessed Down light | | | | | | | |
| | Flush Ceiling light | | | | | | | |
| | Internal Wall light | | | | | | | |
| | Consumer Unit | | | | | | | |
| | Meter Box | | | | | | | |
| | Thermostat | | | | | | | |
| | Shaver Socket | | | | | | | |
| | Single Socket (IP RATED) | | | | | | | |
| | Double Socket (IP RATED) | | | | | | | |
| | External Tap | | | | | | | |
| | BAR Light | | | | | | | |
| | Satellite Connection | | | | | | | |
| | Door to Down Sensor | | | | | | | |

Delamere Park Home illustration

Delamere Park Home



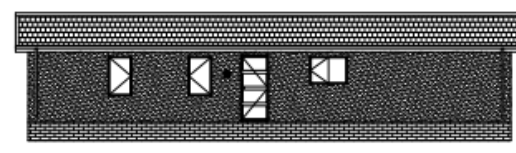
Delamere park home exterior



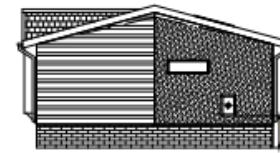
ELEVATION A



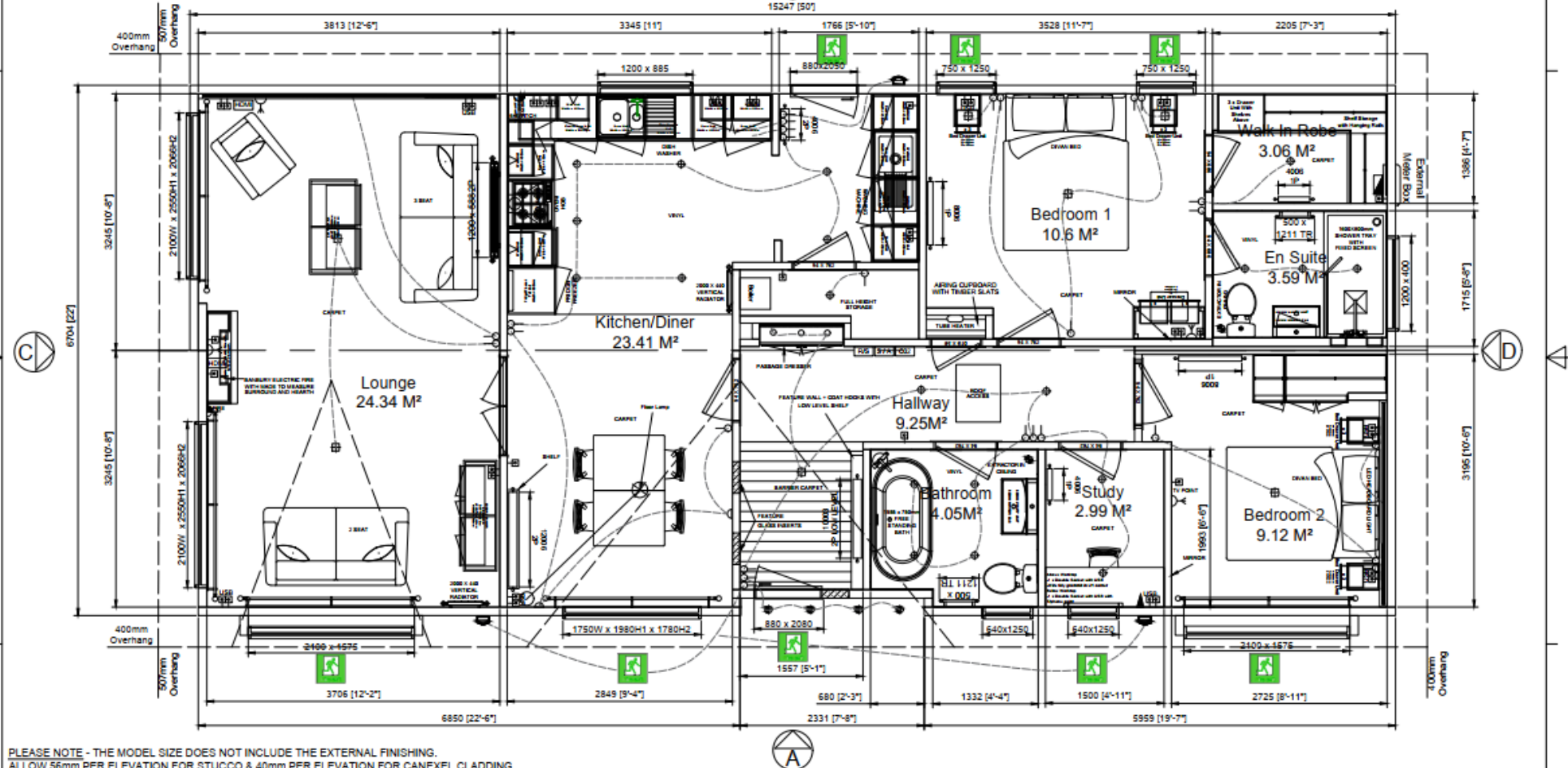
ELEVATION C



ELEVATION B



ELEVATION D



PLEASE NOTE - THE MODEL SIZE DOES NOT INCLUDE THE EXTERNAL FINISHING.
ALLOW 56mm PER ELEVATION FOR STUCCO & 40mm PER CANEXEL CLADDING.



| LEGEND |
|---------------------------|
| Single Socket |
| Double Socket |
| Telephone |
| TV |
| Power Point |
| Smoke Alarm |
| Carbon Monoxide Detector |
| Mechanical Extraction Fan |
| Under Locker Light |
| Recessed Down Light |
| Flush Ceiling Light |
| LED Strip Light |
| Internal Wall Light |
| Consumer Unit |
| Meter Box |
| Thermostat |
| Shower Socket |
| Single Socket (IP RATED) |
| Double Socket (IP RATED) |
| External Tap |
| BAR Light |
| Satellite Connection |
| Duck to Down Sensor |

| REV | DESCRIPTION | AUTH | DATE |
|-----|-------------------------------|------|------------|
| 5 | Removal of Non-Standard Items | MD | 21/08/2019 |
| 7 | Updated to spec | BF | 01/10/2019 |

| SALES: | DATE |
|------------|------|
| PRODUCT: | DATE |
| TECHNICAL: | DATE |

| TITLE |
|--------------------------------|
| Willerby |
| Willerby Park Homes |
| DELAMERE |
| 15,247m x 6,704m (50ft x 22ft) |
| DWG NO. DEL-01-001-000 |

| SCALE |
|-------|
| NTS |

View from Birmingham and Worcester Canal tow path



View of existing/proposed entrance from Shaw Lane –looking east



View of existing/proposed entrance from Shaw Lane –looking south

