

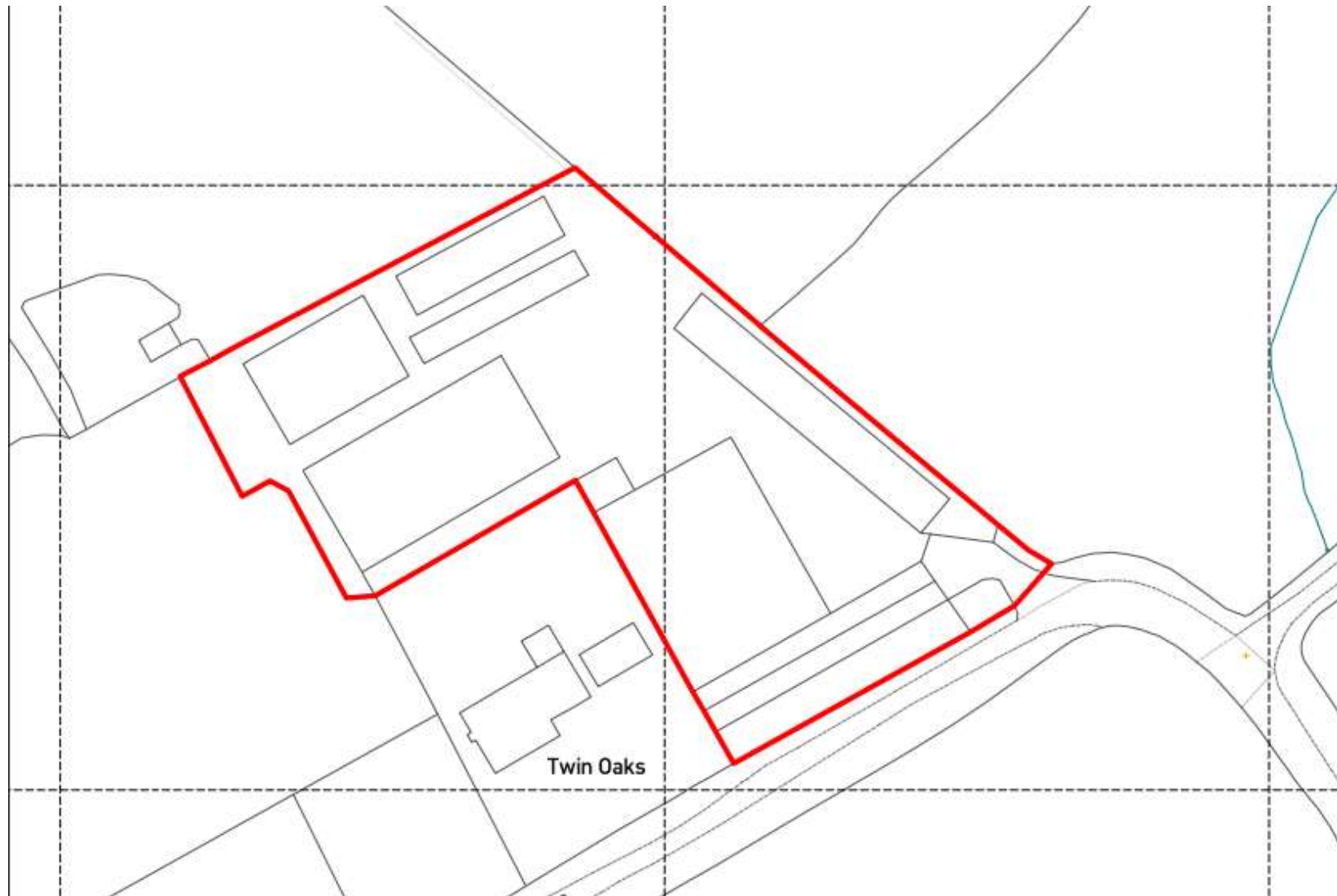
20/01568/FUL

Cur Lane Farm, Cur Lane, Upper Bentley

Redevelopment and change of use to a large portion of an existing mixed use commercial site known as Cur Lane Farm, involving the demolition of existing storage buildings, and the erection of 7 new homes, set out around two new courtyards, accessed from a new roadway ingress off Cur Lane. Two of the existing storage barns will remain to the northern end of the site.

Recommendation: That planning permission be
Refused

Site location plan



Site layout plan



House types



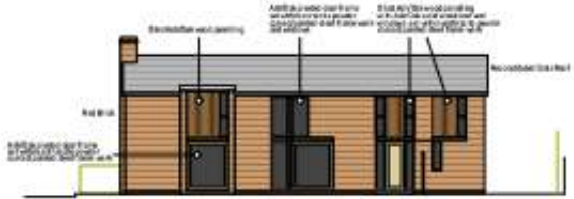
Unit 1 - Looking North



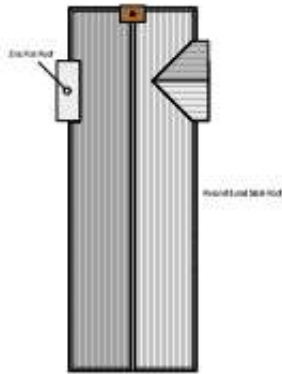
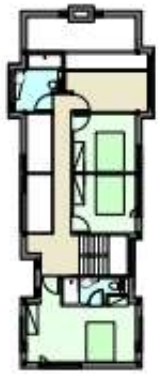
Unit 1 - Looking West



Unit 1 - Looking East



Unit 1 - Looking South

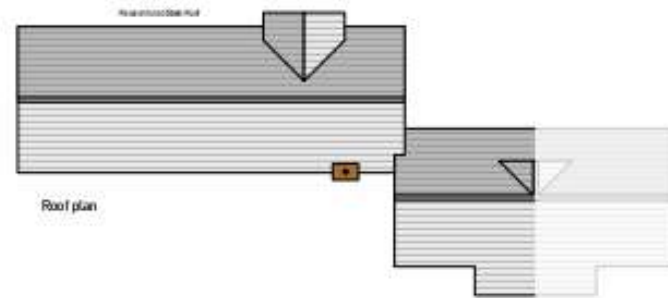


Unit 1 - Looking South





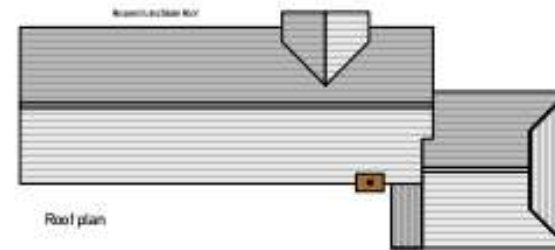
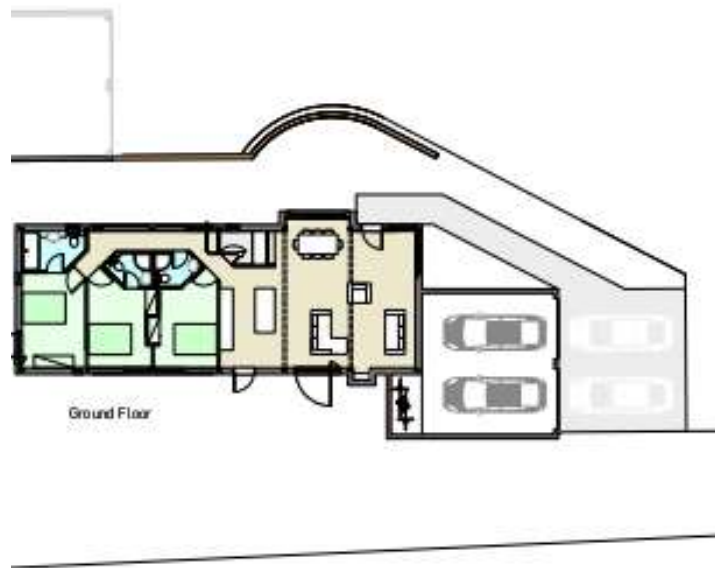
The design solution is based on the principle of a 'small house in a big house'. The design is a small, single-story house with a gabled roof and a central entrance, set within a larger, multi-story building. The design is a small, single-story house with a gabled roof and a central entrance, set within a larger, multi-story building.

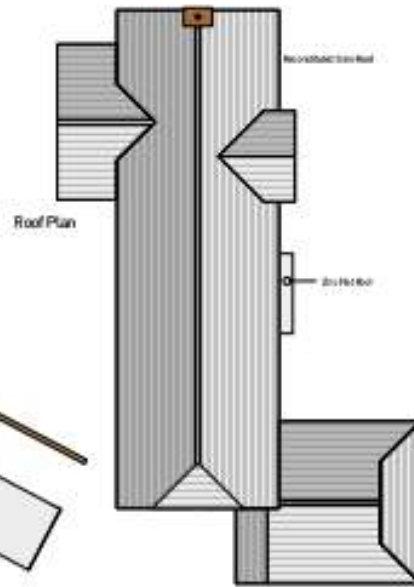


Kjøkken
 design + architecture

Kjøkken design + architecture is a leading architectural firm in Norway, specializing in residential and commercial architecture. The firm has a strong focus on creating high-quality, sustainable, and innovative architectural solutions.

Kjøkken design + architecture is a leading architectural firm in Norway, specializing in residential and commercial architecture. The firm has a strong focus on creating high-quality, sustainable, and innovative architectural solutions.







Unit 5 - Looking East



Unit 5 - Looking South



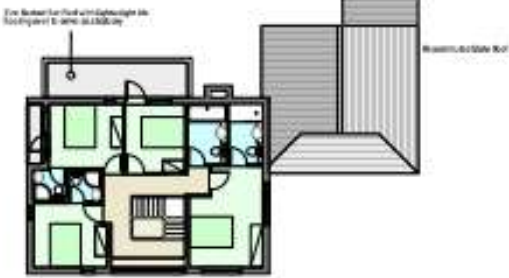
Unit 5 - Looking North



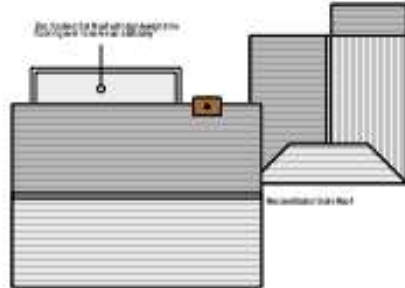
Unit 5 - Looking West



Ground Floor



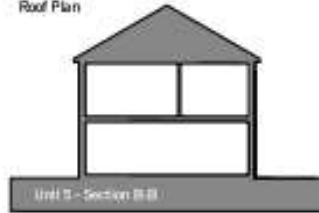
First Floor



Roof Plan



Unit 5 - Section B-B



Unit 5 - Section D-D



• All windows and doors are to be finished with a dark grey or black frame.
 • All external walls are to be finished with a dark grey or black render.
 • All internal walls are to be finished with a white or off-white paint.
 • All floors are to be finished with a dark grey or black tile.
 • All ceilings are to be finished with a white or off-white paint.
 • All lighting is to be provided by recessed ceiling lights.
 • All furniture and fixtures are to be provided by the client.



Unit 6 - Looking East



Unit 6 - Looking North



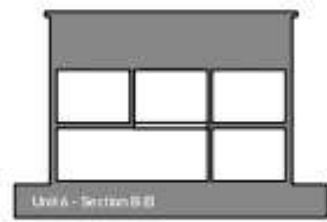
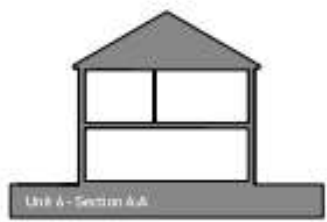
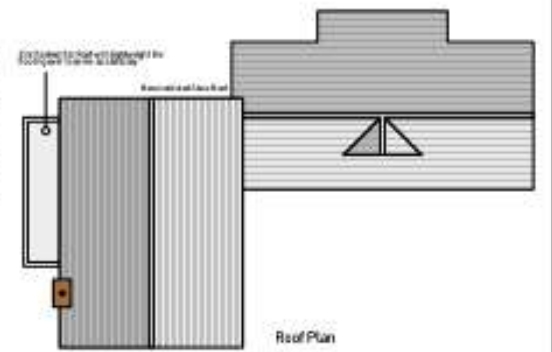
Unit 6 - Looking South



Unit 6 - Looking East (showing garden details)



Unit 6 - Looking West



Kjøkken
 design + architecture
 Kjøkken design + architecture is a leading architectural firm in Norway, specializing in residential and commercial architecture. The firm has a strong focus on sustainable design and high-quality craftsmanship.

Contact Us
 Phone: +47 22 12 34 56
 Email: info@kjoekken.no
 Website: www.kjoekken.no

