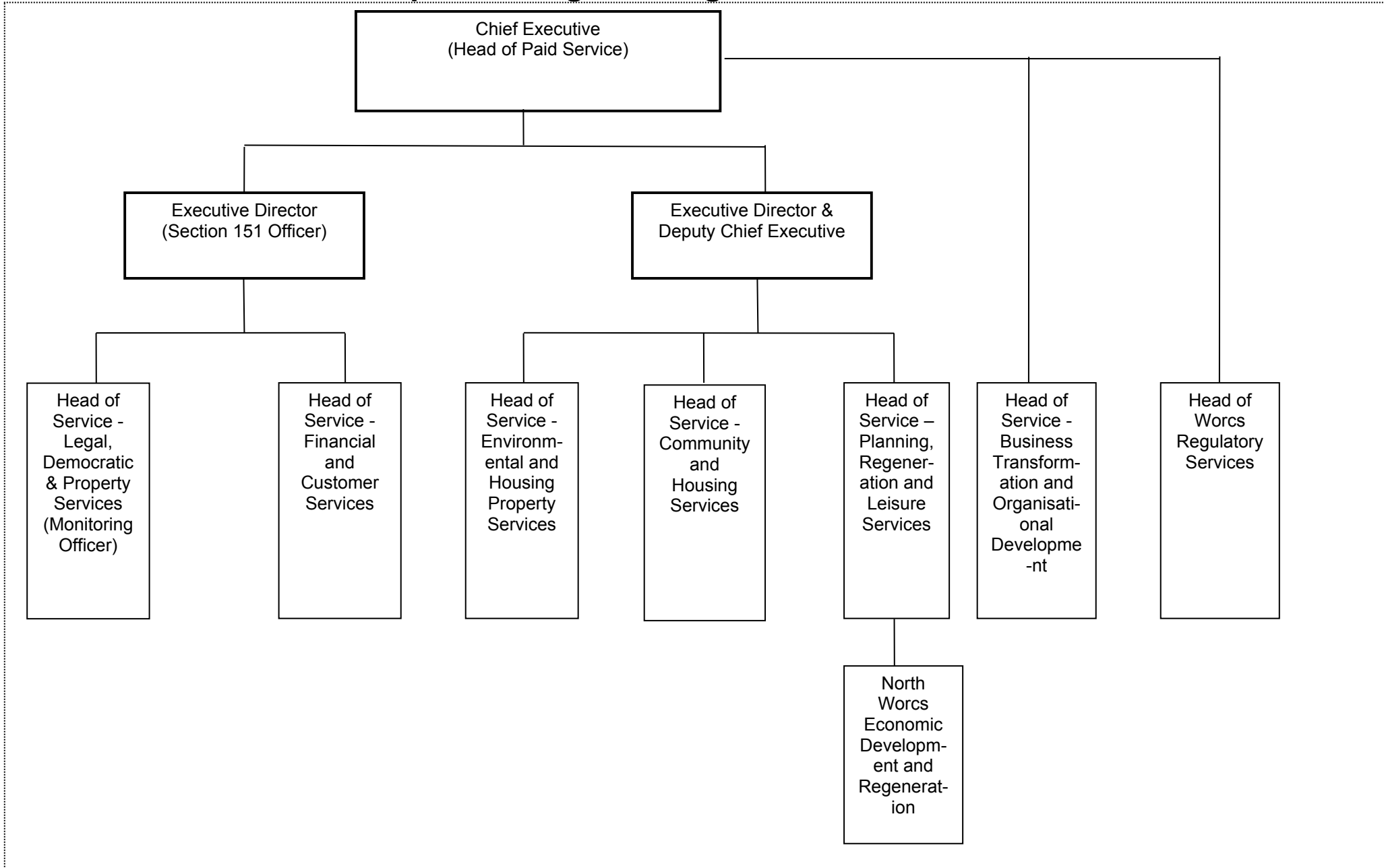


Bromsgrove District Council and Redditch Borough Council Proposed Single Management Structure



Chief Executive

- LSP & Other Strategic Partnerships
- Communications, Marketing and Promotion (including oversight of web content)
- Printing & Reprographics
- Civic/Mayoral Support
- Corporate Administration/ Central Post Opening
- Town Centre Regeneration

Head of Service - Business Transformation, Organisational Development and Customer Services

- I.C.T.
- Business Development
- 5G / Digital Champion
- Web Development
- Land and Property Gazetteer / GIS / Street Naming and Numbering
- Transformation, Business Process Re-engineering and Lean Systems
- Information Management
- Freedom of Information, Data Protection, Records Management
- Organisational Development (including Workforce Planning and Succession Planning)
- Training & Development (strategy)
- Performance Management & Improvement
- Policy (excluding service specific strategy)
- Consultation & Community Engagement
- Customer Insight
- Human Resources
- Training & Organisational Development
- Health & Safety
- Equalities & Diversity

Continuation of Revised Responsibilities

- ***Commercialism – Operational efficiency***

Head of Worcs Regulatory Services

- Health & safety
- Food Safety
- Food Standards
- Licenses (all)
- Pest & Dog Control
- Animal Health and Welfare
- Contaminated land
- Fair Trading
- Consumer and Business Advice
- Air Quality
- Metrology
- Product Safety
- Rogue Trading and Counterfeiting
- Underage Sales
- Statutory Nuisances
- Infectious Diseases

**Head of Service – Legal,
Democratic & Property Services
(Monitoring Officer)**

- Professional Legal Advice & Services
- Election & Electoral Services, Periodic Electoral Review
- Democratic Services & Member Support
- Monitoring Officer Role, Probity & Standards
- Governance
- Advice to Parishes
- Member Development
- Land Charges
- Procurement

New Functions / Services

- ***Assets & Facilities Management***
- ***Property***
- ***Business Development (previously under Leisure Services)***

**Head of Service – Financial and
Customer Services
(new role)**

- Accounts & Financial Management & Advice
- Audit
- Risk Management
- Payroll (RBC, BDC, WFDC)
- Revenues including corporate Income & Debt Management
- Benefits
- Customer Services including:
 - Centres and One Stop Shops
 - Complaints and Customer Feedback
 - Customer Service Strategy
 - Cashiers
 - Reception Services
 - Switchboard Services

Head of Service – Environmental & Housing Property Services

- Waste Management
- Place teams including:
 - Street Scene / Street Cleansing
 - Grounds Maintenance/ Landscaping
- Bereavement Services
- Stores and Depots
- Cesspools/Sewers
- Engineering and Design
- Minor Works Team
- Abandoned Vehicles
- Street Naming and Numbering (operational)
- Tree management inc TPOs
- Land Drainage
- Car Parks/Civil Parking Enforcement

Continuation of Revised Responsibilities

- ***Housing Property Capital and Compliance***
- ***Repairs & Maintenance (including voids and Equipment and Adaptations)***
- ***Mechanical and Electrical***
- ***Commercialism – income Generation / cost reduction***

Head Service –Community and Housing Services

- Community Cohesion (Older and Young People) / Social Inclusion
- Community Safety
- Anti Social Behaviour Team
- CCTV & Lifeline Operation & Development
- Voluntary Sector & Community Networks, Grant Aid
- Transport
- Community Transport / Dial A Ride
- Bus Passes / Concessionary Fares
- Grant Aid
- Housing Strategy and Enabling
- Private Sector Housing
- Disabled Facilities Grants
- Travellers
- Shopmobility
- Children's Centres
- Climate Change / Energy Efficiency

Continuation of Revised Responsibilities

- ***Homelessness***
- ***Housing Options/Choice Based Lettings***
- ***Housing Performance and Database***
- ***Right to Buy***
- ***St David's House Extra Care Housing***
- ***Tenancy Management***

Head of Service – Planning, Regeneration and Leisure Services

- Strategic Planning (Planning & Local Development Framework)
- Development Management (including Planning Enforcement)
- Building Control
- Land Charges
- Emergency Planning / Business Continuity
- Conservation
- Economic Development

New Functions / Services

- ***Leisure and Cultural Services Strategy incorporating***
- ***Development Services (Sports and Arts Development)***
- ***Parks and Events***