



BRIEFING NOTE

To: Overview and Scrutiny Committee
From: Bev Houghton
Dept: Community Safety
Contact Info: 01527 534187

CC: Cllr Margaret Sherrey – Portfolio Holder for Health & Wellbeing and Community Safety
Sue Hanley – Deputy Chief Executive
Judith Willis – Head of Community Services

North Worcestershire Community Safety Partnership 2016/17

1. Summary

1.1 This report provides an update on the progress of the North Worcestershire Community Safety Partnership (NWCSP) during 2016/17.

2. Background

2.1 NWCSP has been in existence since May 2013, following the merger of the three district CSPs in Bromsgrove, Redditch and Wyre Forest. The community safety teams have continued to remain with the respective local authorities.

2.2 Local representation on NWCSP is fulfilled through a number of positions. Bromsgrove District Council's Elected Member representative is the Portfolio Holder for Health & Wellbeing and Community Safety, Councillor Margaret Sherrey. Sue Hanley, the Council's Deputy Chief Executive is Chair of NWCSP and Bromsgrove District Council's Responsible Authority representative on the Partnership is Head of Community Services, Judith Willis. The Council's Community Safety Manager provides support to NWCSP and is also Chair of the Safer Bromsgrove Group.

2.3 Scrutiny arrangements for the CSP currently remain unchanged with local authorities having a statutory duty to scrutinise the work of its local CSP, under Section 19 of the Police and Justice Act 2006.

2.4 Alongside the relationship the Council has with the CSP, there is also a direct role in holding the West Mercia Police and Crime Commissioner (PCC) to account through the West Mercia Police and Crime Panel (PCP). Bromsgrove District Council's representative on the PCP is the Portfolio Holder for Health & Wellbeing and Community Safety, Councillor Margaret Sherrey.

3. Current Position

3.1 Partnership Structure

District Operational Groups are identified as Safer District Groups and are known as Safer Bromsgrove Group, Safer Redditch Group and Safer Wyre

Forest Group. There are also a number of other sub-groups as illustrated below.

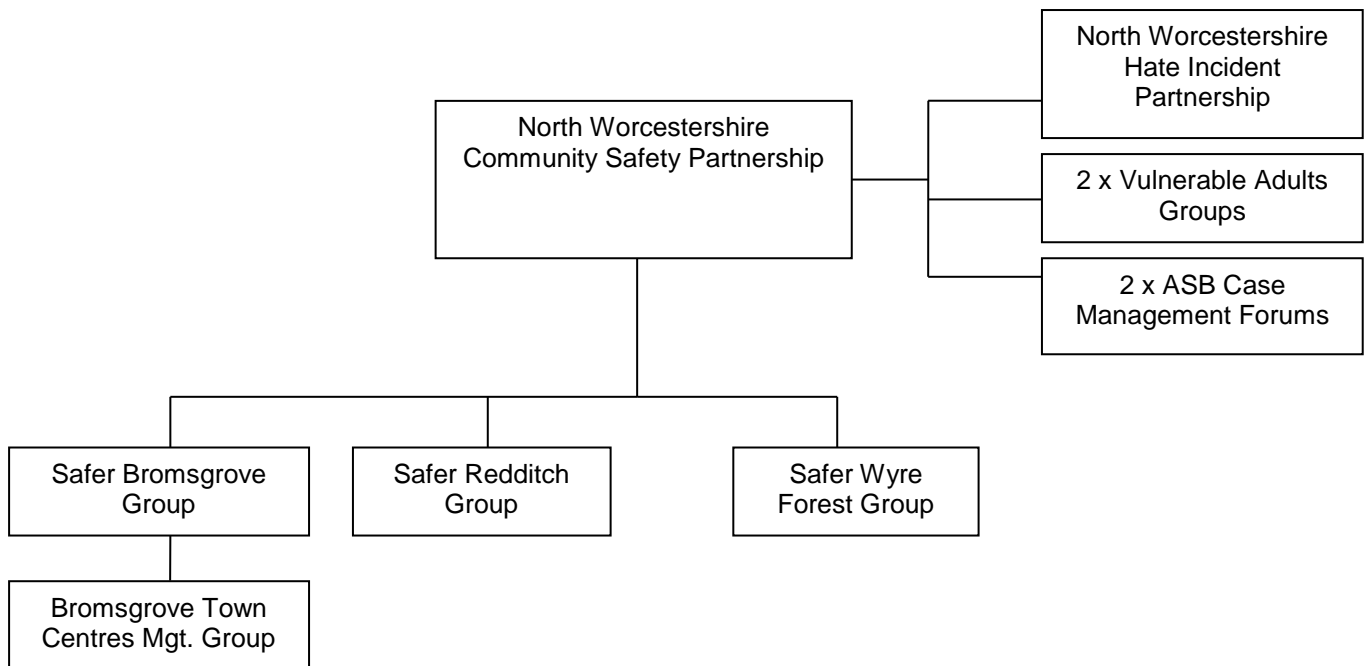


Diagram 1: Structure of the North Worcestershire Community Safety Partnership

3.2 Strategic Assessment and Partnership Plan

NWCSP has a statutory duty to produce a three year rolling plan outlining how the Partnership intends to address key crime and community safety priorities, as identified through its annual Strategic Assessment. A list of the statutory and invited partners is available at **Appendix One**.

The Strategic Assessment gathers research, evidence and intelligence from national and regional sources, as well as drawing on professional expertise of those working locally. It is designed to be a point of reference and guidance to resource community safety initiatives among partner agencies across the area.

The Strategic Assessment is currently being developed ahead of a refreshed Partnership Plan being produced for 2017-20. The draft Strategic Assessment has already identified priorities for the partnership to focus on and these were agreed in December 2016. They are:

- I. Reducing Violence and abuse: including sexual offending and domestic abuse (to include Child Sexual Exploitation (CSE))
- II. Reducing Theft and Acquisitive crime: including shoplifting, thefts and burglaries
- III. Reducing Anti-Social Behaviour, Damage and Nuisance: including criminal damage, environmental issues and deliberate fires/arson

- IV. Protecting vulnerable communities: including harassment and threatening behaviour
- V. Reducing Offending and Drug and Alcohol Misuse are cross cutting themes which impact on all priorities

The Strategic Assessment will provide detailed analysis on each of these priorities, identifying locations, victims and offenders and the Partnership Plan will detail how the Community Safety Partnership will tackle its priorities. The Plan will include details on what outcomes the Partnership wishes to achieve, and the clear actions that will be undertaken in each district and across North Worcestershire, including how performance will be measured.

3.3 John Campion, West Mercia Police and Crime Commissioner

John Campion was elected as the Police and Crime Commissioner for West Mercia on 5th May 2016. The PCC has a duty to co-operate with CSPs to reduce crime and disorder and there is a reciprocal duty on CSPs to collaborate with the PCC. The PCC and the CSP must have regard to each other's priorities within their respective plans. The PCC's Safer West Mercia Plan was published in October 2016 and his vision will be reflected in the NWCSP Partnership Plan, which the partnership will contribute to delivering at a local level. The PCC's vision is focused on four key areas:

- I. Building a More Secure West Mercia: CSE, domestic abuse, vulnerable people, sexual offences, ASB, drugs and alcohol, reducing reoffending, road safety
- II. Reassuring West Mercia's Communities: feeling safe as well as being safe, engaging with the public, protecting from cyber-crime, making voices heard around rural crime
- III. Putting Victims and Witnesses First
- IV. Reforming West Mercia

Tracey Onslow was appointed as Deputy Police and Crime Commissioner in July 2016. Her role is to represent the PCC in communities across West Mercia. Her portfolio includes cyber, rural and business crime, victims' services and commissioning. CSPs will be working closely with the Deputy PCC as the commissioning model is developed and put into operation. To assist with the development, CSPs have been advised that the Deputy PCC is undertaking a review of CSP funding with a focus on outcomes.

3.4 Grant Funding from the PCC 2017/18

CSPs in West Mercia have been advised of their respective funding allocations for 2017/18 but were still asked to apply to the PCC with details of how each CSP would like to use their allocation. On 7th February 2017, an extraordinary meeting of the NWCSP was held to agree which projects and areas of work partners would wish money to be allocated to. The funding available is based on previous year's allocations and the table attached at

Appendix Two shows projects that NWCSF has agreed to deliver using its funding allocation. It should be noted that this funding is only for financial year 2017/18 and NWCSF will be advised in March if its applications have been agreed.

On behalf of the three Local Authorities, NWCSF is also making an application to the PCC for funding towards CCTV. This is for a capital contribution to modernise the CCTV infrastructure to Internet Protocol Recording alongside the cameras. This is separate to NWCSF's funding allocation.

3.5 Future funding from the PCC

As stated at 3.3, the Deputy PCC will be conducting a review of CSP funding ahead of a new outcomes-based commissioning framework that will be implemented in April 2018. The CSP is awaiting detailed information regarding the framework but it is understood that it will help CSPs and the PCC to further its understanding of local need, crime patterns and trends. It will enable the PCC to commission projects and services alongside the CSPs delivery; that focuses on need, address gaps in provision and meet outcomes.

3.6 Local Delivery, Key Projects and Progress

Local delivery of community safety projects and initiatives falls under the remit of the Community Safety Operational Groups. The Safer Bromsgrove Group meets on a 6 weekly basis to monitor district performance and review local operational delivery. This group is the first point of contact for any local crime and community safety issues or concerns that may require a multi-agency response.

Progress of grant funded projects is reported to the PCC and at the end of the financial year there is a requirement to provide a comprehensive report to the PCC reviewing all projects funded in 2016/17. This will include a breakdown of expenditure and demonstrate the difference the projects have made. This report can be shared with Members once it has been endorsed by NWCSF. This report will now provide an update on some of the key funded projects.

Dedicated Bromsgrove Community Safety Project Officer

Safer Bromsgrove has invested some its PCC grant allocation and reserves in retaining a dedicated Officer to deliver community safety projects and initiatives and liaise with local communities and groups on crime prevention and personal safety issues. David Rischmiller took up this post in May 2016 and prior to this he was the NWCSF Business & Rural Crime Coordinator.

Alongside partners, the Bromsgrove Project Officer has worked with a number of local community groups and residents to offer guidance and information on a variety of community safety concerns. For example; a small community of elderly residents in Charford received joint visits from the project officer and local Safer Neighbourhood Team (SNT) Police Officers to carry out home security assessments and provided crime prevention tools and information. This was following a spate of burglaries in the area, police patrols were

increased and the Fire Service Community Risk Manager also co-ordinated a number of Home Fire Safety checks for the residents.

Last summer the Project Officer worked closely with Romsley Parish Council following concerns regarding an increase in vehicles visiting the Recreation Ground believed to be from the Birmingham borders and linked to possible drug activity. The Officer liaised with SNT Police colleagues, met with Parish council members and conducted a crime prevention site survey of the area making recommendations for physical alterations to the site to deter further activity. Ongoing monitoring of the situation and liaison with partners continues.

Following concerns raised by the Ward Member regarding crime levels in Rock Hill, the Community Safety Project Officer carried out a consultation with local residents, reviewed Police crime data and assessed the structural and built environment vulnerabilities in the area. A final Community Safety report was produced and endorsed by the Safer Bromsgrove group and the majority of the crime prevention recommendations for the area have been completed in partnership with local residents, BDHT, Place Teams and Highways. The Project Officer continues to liaise with the Ward Member regarding further crime concerns raised with him by local constituents.

Town Centres Management Group

Following a crime and ASB data presentation to the Safer Bromsgrove Group (June 2016) highlighting an increase in alcohol related disorder in the town centre, a group was established to focus attention on partnership activities that could reduce this trend. Led by Cheryl Welsh, the Bromsgrove Centres Manager, the group works closely with the Community Safety project officer and brings together the Police, Licensees and Businesses, Licensing Officers and Place Teams to identify community safety issues in the Town Centres and in particular the Night Time Economy. The group has had success in revitalising the local Pub Watch group and promoting the use of Face Watch, an online information sharing platform that allows the police, licensed premises and businesses to share crime prevention and community safety information and intelligence to other members in a confidential way. The group reports to Safer Bromsgrove as a sub-group but also has a dual function of improving and encouraging footfall in the Town Centres as part of the Council's Economic Development and Regeneration Strategy.

Bromsgrove & Redditch Schools Respect Programme

The Respect programme continues to be successful providing whole day awareness sessions as part of school drop down days, it also provides bespoke classroom sessions on a number of subjects such as recognising and reporting hate crime, understanding healthy relationships and domestic abuse, the dangers of substance misuse and promoting respect and community responsibility. The project also provides one to one mentoring sessions to individual students who are felt to be at risk of becoming involved in crime and ASB or are at risk of becoming victims of crime.

Last school year (Sept 15 to July 16) the project saw 1445 students receive community safety information during PHSE lessons and drop down days across Bromsgrove and Redditch. 104 students were referred for 1 to 1 support through therapeutic mentoring sessions and 78 students received information via targeted small group workshops. 29 students took part in the nationally recognised CRUSH Programme, a young people's Domestic Abuse awareness course created and accredited by Women's Aid.

Youth ASB Diversionary Activities

In May 2016 to support the structural improvements to the Churchfields multi-storey car park, Safer Bromsgrove allocated funding to commission a programme of diversionary youth activities delivered by the YMCA a local Positive Activities provider. This detached youth work project saw youth workers engage with young people in the area using multi-sports diversionary activities particularly targeted at the young people believed to be accessing the multi-storey car park.

The project launched with a multi-sports taster day in the spring half term and in the following weeks, the youth workers were in the area every Friday night engaging with a view to reducing ASB in the area. By Sept the group of young people had significantly reduced and there had been no reports of increased ASB displaced to other areas. The project is currently on hold but is ready to be resumed if required in the lighter months of this current year.

Community Safety Intergenerational Project

Safer Bromsgrove allocated funding to support a project idea put forward by pupils at North Bromsgrove High School. The intergenerational project saw a group of 6th Form students working with older local residents in the town on a photography project. The programme began at the end of November, with five year 13 students and five residents from BDHT sheltered housing schemes. The group meet weekly and the final session was held on 12th Dec. The group shared their interests, and life journeys along with ideas for the final photography product. The themes all had a community safety focus with the main theme being to challenge stereotypes and perceptions of the young and old. Throughout the project the students worked with the BDHT residents teaching them photography and editing skills. There was a celebration event for family, friends and community safety partners held at the Artrix on 27th Jan 2017 and the photographic exhibition was on display in the studio gallery area for several weeks for visitors to view.

Safe Place Scheme

The Safe Place Scheme is a CSP funded scheme which was set up by Our Way Self Advocacy in Wyre Forest in 2014 and has now been rolled out across Worcestershire. It offers vulnerable people a safe place to go if they have a problem or concern when out and about in the town centres. All Safe Places are identified by a Safe Place sticker and staff receive training so that they are able to give reassurance and help people contact appropriate support, if needed. A directory of the Safe Places in Bromsgrove and across the county is available at www.ourway.org.uk/safe-place-scheme/ and there is now a free Safe Place Scheme app available for mobile phones. Downloads

of “My Town Worcestershire” from the App Store, will show you your nearest “Safe Place” and can guide you to it through Google Maps.

Community Safety teams in Worcestershire are working in partnership with West Mercia Police and Our Way Self Advocacy to support, develop and maintain the scheme across the county. A Bromsgrove Community Safety Project Officer was instrumental in supporting the roll out of the scheme across the county and led on the development of a Mobile Phone App for the scheme that is also shared and supported by the Bromsgrove Street Pastors.

Hate Crime Awareness Week 2016

As part of national Hate Crime Awareness Week in October and using funding provided by the PCC, North Worcestershire Hate Incident Partnership organised a number of community engagement events across the districts. Locally, an awareness stand was set up in Bromsgrove High Street and a Street Theatre Company was commissioned to engage with residents through a number of thought provoking performances.

Over 100 information bags were handed out and Residents felt comfortable approaching the stand and engaging with performers and staff to find out more about hate crime. In some instances, people also offered their own personal experiences of how they had been a victimised and how services could be improved. Information was displayed in public areas across the town and press releases were sent to the local papers. The events were also promoted via relevant Twitter and Facebook pages, including support from Sajid Javid MP for Bromsgrove who attended the stand on the day and filmed one of the performances. He then gave an interview, which he later circulated on twitter.

Community Engagement

Over the year, Community Safety Project Officers have attended a number of events in order to speak to local residents, provide crime prevention advice and raise awareness of campaigns. In Bromsgrove between April and Dec 2016, Project Officers estimated that they had spoken to over 316 people at various events; for example, attending Older People’s forums and sheltered housing schemes, Neighbourhood Watch & Parish Council events, White Ribbon campaign stands and Christmas crime prevention events. Purse bells, chains and cables; personal attack alarms and shed alarms remain popular items and are useful as methods of engagement to encourage residents to discuss personal and home security. 121 people had received Home Security information and guidance, 232 people had received personal safety information. 21 people had received targeted intervention of Home Security works at their properties and 165 people reported that they felt safer as a result of Community Safety intervention.

ASB Case Management Group

The Bromsgrove & Redditch ASB Case Management Group was established in July 2016. The Group assesses repeat victims of ASB, considers persistent offenders and locations of concern, putting appropriate actions into place. The Group is chaired by West Mercia Police’s North Worcestershire Harm Hub

Sergeant and has multi-agency membership including 5 local housing associations alongside Drug and Alcohol Service providers and Family Support services. High risk victims of ASB have their risk management plans discussed at the group and partners offer additional support, where appropriate.

3.7 Crime and Anti-Social Behaviour Data

In the new Partnership Plan, NWCSP will be assessed on its performance by how it achieves its desired outcomes. CSPs are moving away from the traditional method of considering police recorded crime and ASB data as performance indicators and are moving more toward focusing on delivering agreed partnership outcomes and improving mainstream provision. This is partly being driven by the PCC and his outcomes-based commissioning framework that is currently in development. This is a different way of assessing the work of CSPs and the Research and Information Officer will be instrumental in assisting partners to ensure performance measurement and evaluation are carried out in the best way to evidence that partnership activities are making a difference.

Currently levels of crime and disorder across North Worcestershire are presented using a limited range of data sources (police recorded crime, anti-social behaviour incidents, deliberate fire data) and this information is used at a range of groups at varying geographical and decision-making levels.

Appendix Three shows year to date figures for total recorded crime, key crime types and anti-social behaviour. Year to date data for all recorded crime in Bromsgrove illustrates an 8% increase or 337 more offences, compared to the same period last year. This percentage increase in total recorded crime is slightly lower than North Worcestershire levels as a whole. Redditch saw a 13% increase and in Wyre Forest there was an 11% increase in total recorded crime. North Worcestershire CSP met on the 8th March and these figures were discussed in further detail.

4. Recommendation

- 4.1 That progress made by the North Worcestershire CSP be noted.

5. Appendices

Appendix One: NWCSP Membership List

Appendix Two: Table of Funding Requests made by NWCSP to the PCC 2017/18

Appendix Three: North Worcestershire Crime and ASB Data (Apr16 - Jan17)

6. Background Papers

West Mercia PCC's Safer West Mercia Plan 2017/21

Officer Contact Details:

Name: Bev Houghton

Title: Community Safety Manager

Tel: 01527 534187

Email: bev.houghton@bromsgroveandredditch.gov.uk