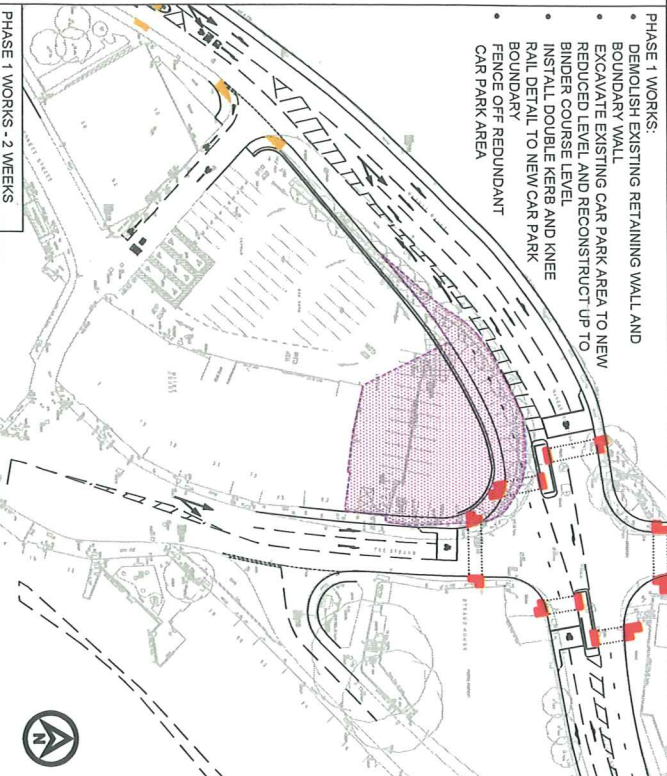
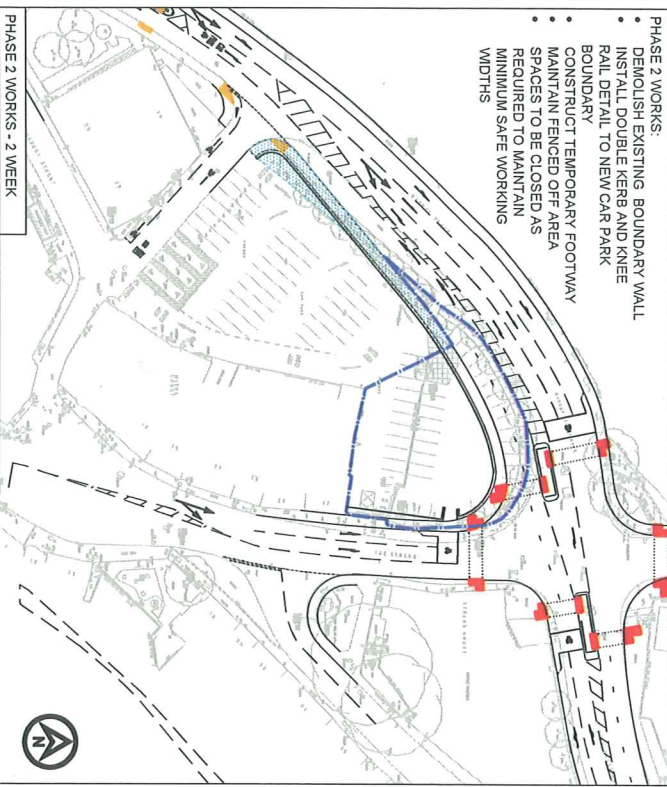


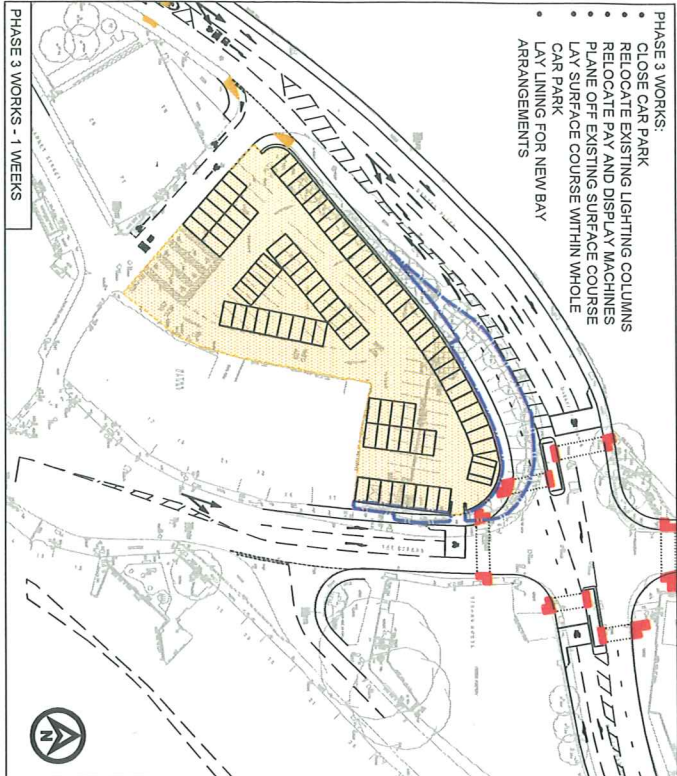
- PHASE 1 WORKS:**
- DEMOLISH EXISTING RETAINING WALL AND BOUNDARY WALL
 - EXCAVATE EXISTING CAR PARK AREA TO NEW REDUCED LEVEL AND RECONSTRUCT UP TO BINDER COURSE LEVEL
 - INSTALL DOUBLE KERB AND KNEE RAIL DETAIL TO NEW CAR PARK BOUNDARY
 - FENCE OFF REDUNDANT CAR PARK AREA



- PHASE 2 WORKS:**
- DEMOLISH EXISTING BOUNDARY WALL
 - INSTALL DOUBLE KERB AND KNEE BOUNDARY
 - CONSTRUCT TEMPORARY FOOTWAY
 - MAINTAIN FENCED OFF AREA SPACES TO BE CLOSED AS REQUIRED TO MAINTAIN MINIMUM SAFE WORKING WIDTHS



- PHASE 3 WORKS:**
- CLOSE CAR PARK
 - RELOCATE EXISTING LIGHTING COLUMNS
 - RELOCATE PAY AND DISPLAY MACHINES
 - PLANE OFF EXISTING SURFACE COURSE
 - LAY SURFACE COURSE WITHIN WHOLE CAR PARK
 - LAY LINING FOR NEW BAY ARRANGEMENTS



	PHASE 1 WORKS - 2 WEEKS OPERATIONAL CAR PARK SPACES: 44 STANDARD AND 6 DISABLED
	PHASE 2 WORKS - 2 WEEKS OPERATIONAL CAR PARK SPACES: 43 STANDARD AND 6 DISABLED
	PHASE 3 WORKS - 1 WEEK OPERATIONAL CAR PARK SPACES: CAR PARK TO BE CLOSED DURING WORKS FOR SAFETY
	FENCING TO BE ERECTED AND MAINTAINED AROUND AREA OF EXISTING CAR PARK

CAR PARK SPACES:	EXISTING:	94
	TOTAL SPACES	94
	DISABLED SPACES	6
	PROPOSED:	90
	TOTAL SPACES	90
	DISABLED SPACES	7

- NOTES**
- THIS DRAWING IS BASED ON CHETWOOD'S ARCHITECTS DRAWING No. SK1020.
 - ALL HIGHWAY PROPOSALS ARE INDICATIVE AND ARE SUBJECT TO DETAILED DESIGN AND HIGHWAY AUTHORITY APPROVAL.

REV	DATE	DESCRIPTION	BY	CHK	APP
B	19.08.11	REVISE PHASING	MB	CF	CF
A	22.08.11	FIRST ISSUE	MB	CF	CF

Sainsbury's

BROMSGROVE

PHASING OF IMPROVEMENTS TO EXISTING CAR PARK

ROYAL HASKONING

an Arup Group Firm
 10th Floor, 100 Broad Street, Birmingham B1 2HT
 Tel: +44 (0)121 252 5000
 Fax: +44 (0)121 252 5001
 Email: royal.haskoning@arup.com

HASKONING UK LTD
 DEVELOPMENT AND TRANSPORT

DRAWN	MB	CHECKED	CF	APPROVED	CF
DATE	22.08.2011	DATE	22.08.2011	DATE	22.08.2011
SCALE	1:1000 @A3	STATUS	FOR COMMENT		
DRAWING NO.	3P7502 SK025	REVISION	B		